
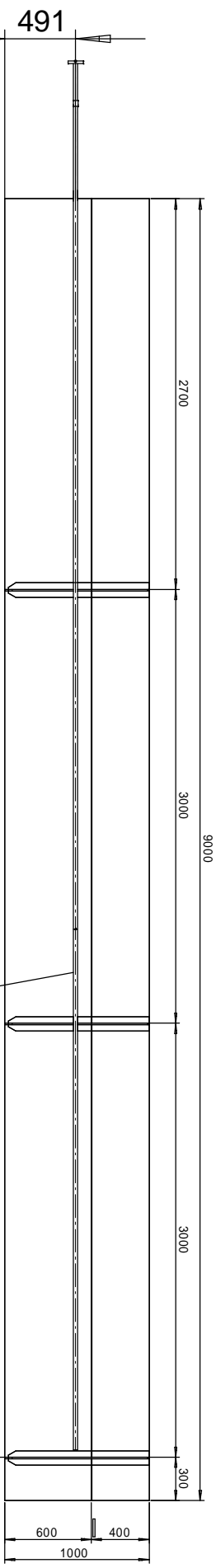


7	6	5	4	3	2	1
E						E
D						D
C						C
B						B
A						A

<p>izmjena Revision</p>	Opis Description	Datum Date	Ime Name
<p>NACIONALNE VLASTI/FLAG STATE AUTHORITIES KLASIFIKACIJSKO DRUŠTVO/CLASSIF. SOCIETY VLASNIK/OWNER</p>			
<p>Odobreno od/Approved by</p>			
<p>Izradio Designed by</p>	<p>Datum Date</p>	<p>Ime Name</p>	<p>Potpis Signature</p>
<p>Prepared Checked by</p>	<p>08.2023</p>	<p>Zoran Došenović</p>	
<p>Checked by</p>	<p>08.2023</p>	<p>Milko Mlačić</p>	
<p>Checked by</p>	<p>08.2023</p>	<p>Milko Mlačić</p>	
<p>Head of project</p>	<p>08.2023</p>	<p>Milko Mlačić</p>	
<p>Mjerilo/Scale</p>	<p>Naziv nacrt/Drawing title</p>	<p>NOV / NB 841</p>	
<p>PIPELINE POSITION ON PLATFORM ASSEMBLIES - GROUP 301, 302, 401, 402</p>		<p>Dopis broj/Letter No. BIS PROJEKTI NI URED - SPLIT DIV GRUPA d.o.o.</p>	<p>Datum/Date</p>
<p>Yard:</p>		<p>Veza nacrt/Connecting dwg.</p>	
<p>PR. / PROJECT IRI 12</p>	<p>Listova/Pgs A + 14</p>	<p>List/Pg A</p>	<p>Ident broj/Req No</p>

A402/A2/18



NOMINAL DIAMETER ND	OUTER DIAMETER Do (mm)	WALL THICKNESS (mm)	STANDARD	MATERIAL
20	26,9	2,0	EN 10216-5	2205
25	33,7	2,0	EN 10216-5	2205

REMARKS:
PIPE ASSEMBLY ND20 FOR MICROPANEL A402/A2/18 SHOULD BE MARKED AND PACKED TOGETHER WITH OTHER PIPE ASSEMBLY OF MICROPANEL.

R.15

9600

BUTT WELD OF PIPE DIAMETER ND20

3600

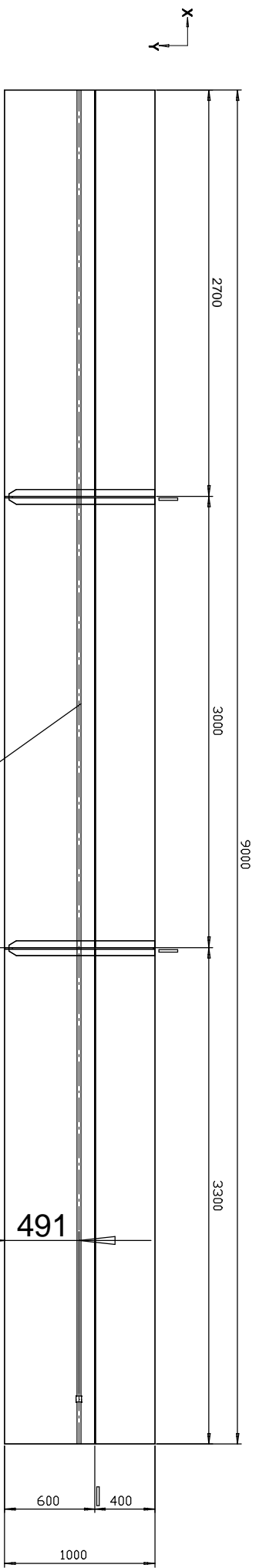
PIPE DIAMETER ND20; MATERIAL DUPLEX 2205

FLANGE EN 1092-1; type 01; pn6; RATED DIAMETER ND20; MATERIAL DUPLEX 2205 (316L)

PIPE DIAMETER ND25; L=40mm; MATERIAL DUPLEX 2205

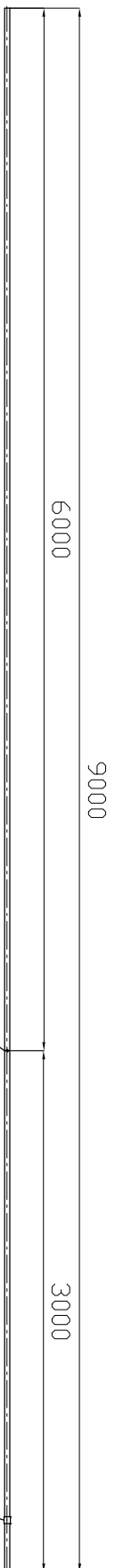
REMARKS: DO NOT WELD ON PIPE ND20

A402/A2/12



NOMINAL DIAMETER ND	OUTER DIAMETER Do (mm)	WALL THICKNESS (mm)	STANDARD	MATERIAL
20	26,9	2,0	EN 10216-5	2205
25	33,7	2,0	EN 10216-5	2205

REMARKS:
 PIPE ASSEMBLY ND20 FOR MICROPANEL A402/A2/12 SHOULD BE MARKED AND PACKED TOGETHER WITH OTHER PIPE ASSEMBLY OF MICROPANEL.

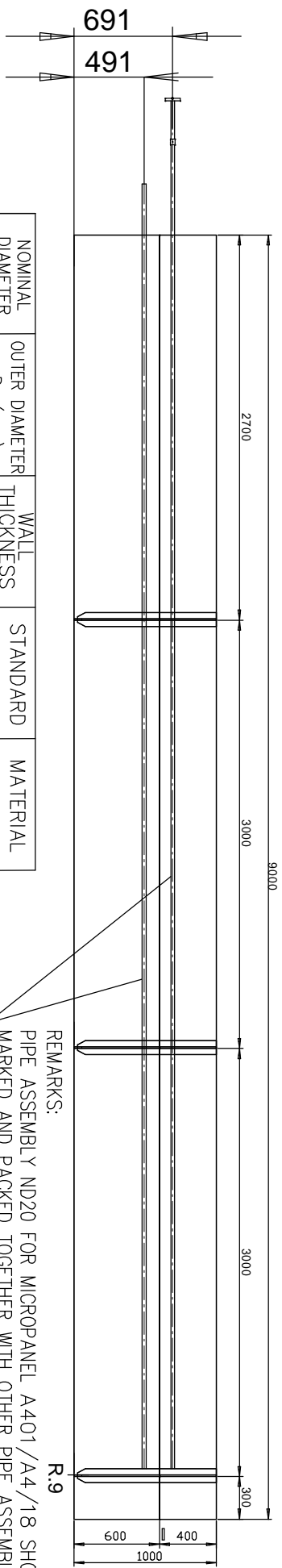


BUTT WELD OF PIPE DIAMETER ND20

PIPE DIAMETER ND25; L=40mm; MATERIAL DUPLEX 2205

REMARKS: DO NOT WELD ON PIPE ND20

A401/A4/18



NOMINAL DIAMETER ND	OUTER DIAMETER Do (mm)	WALL THICKNESS (mm)	STANDARD	MATERIAL
20	26,9	2,0	EN 10216-5	2205
25	33,7	2,0	EN 10216-5	2205

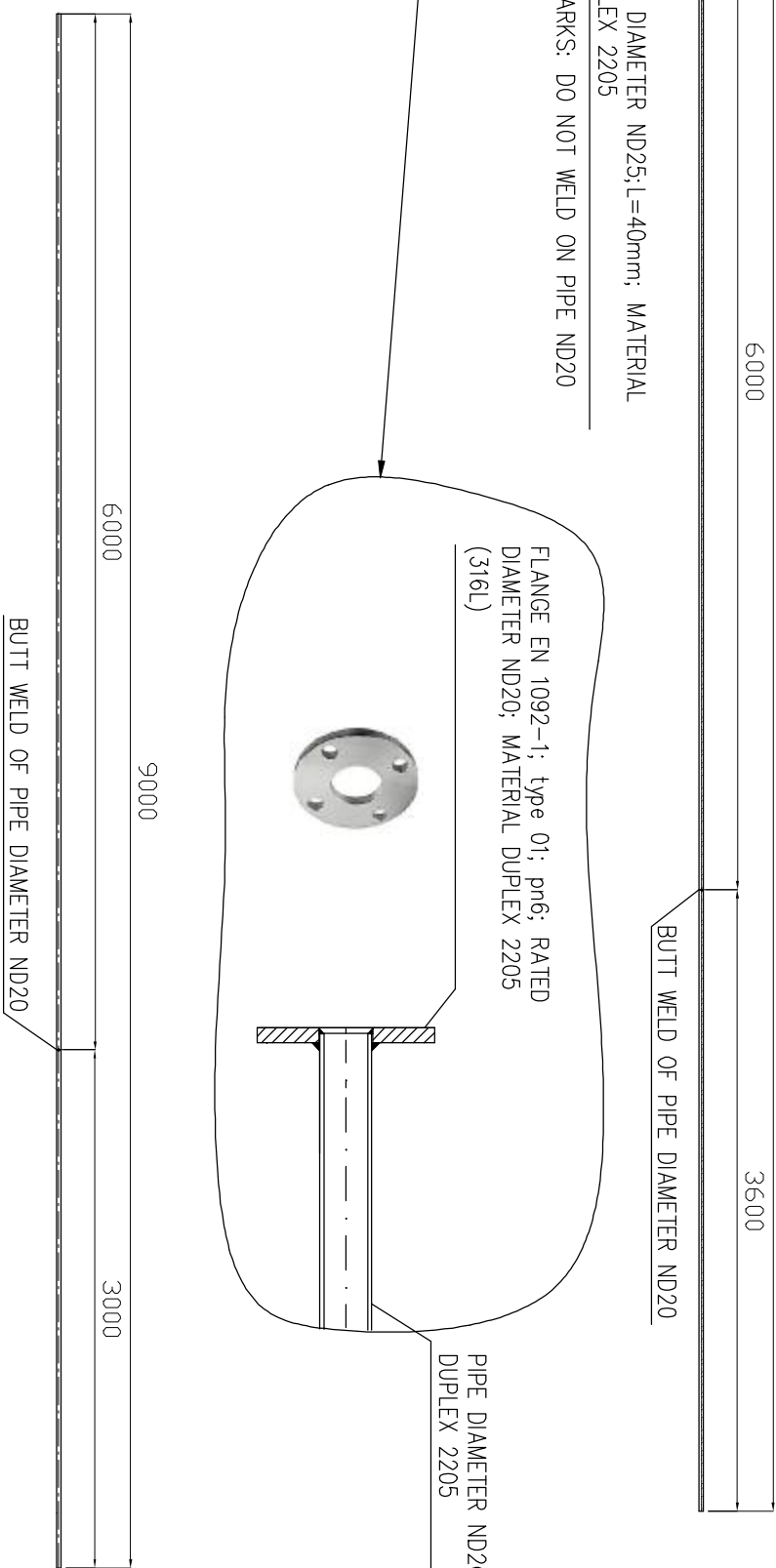
REMARKS:
 PIPE ASSEMBLY ND20 FOR MICRO PANEL A401/A4/18 SHOULD BE MARKED AND PACKED TOGETHER WITH OTHER PIPE ASSEMBLY OF MICRO PANEL.

PIPE DIAMETER ND25; L=40mm; MATERIAL DUPLEX 2205
 REMARKS: DO NOT WELD ON PIPE ND20

FLANGE EN 1092-1; type 01; pn6; RATED DIAMETER ND20; MATERIAL DUPLEX 2205 (316L)

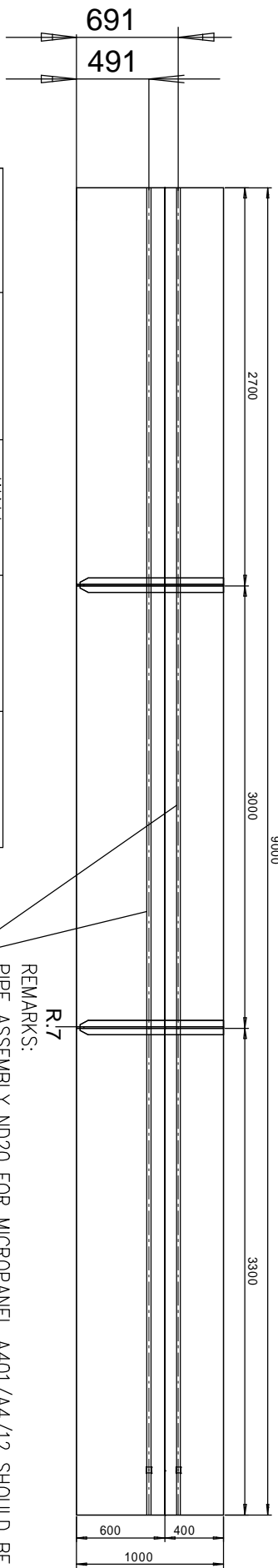
PIPE DIAMETER ND20; MATERIAL DUPLEX 2205

BUTT WELD OF PIPE DIAMETER ND20



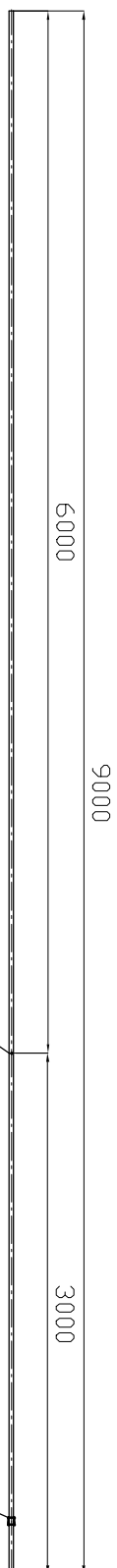
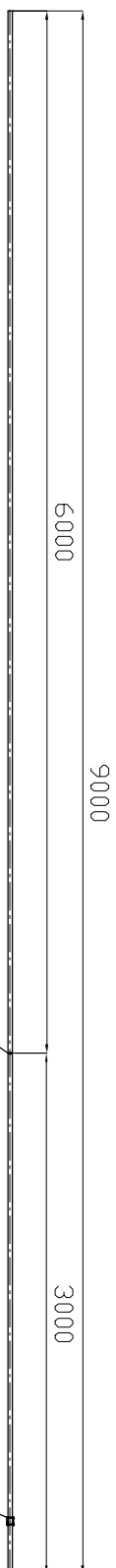
BUTT WELD OF PIPE DIAMETER ND20

A401/A4/12

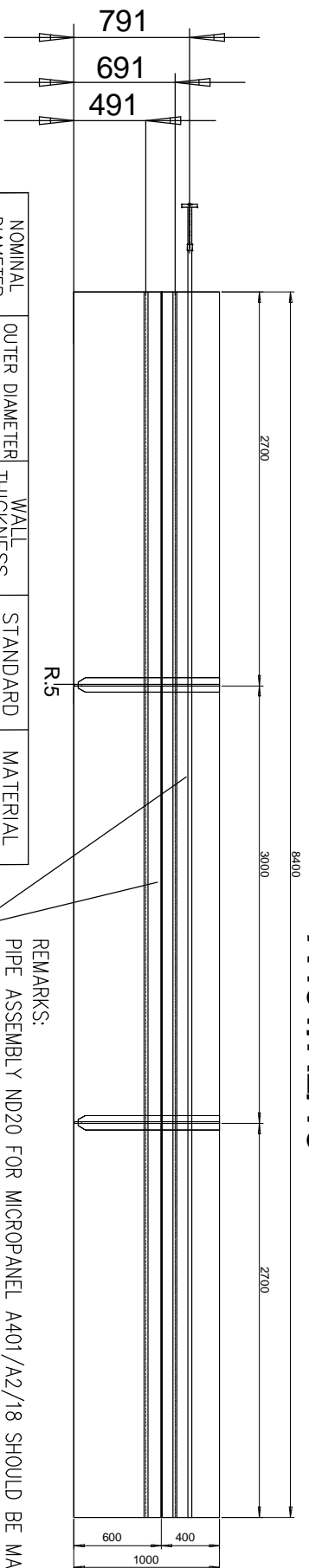


NOMINAL DIAMETER ND	OUTER DIAMETER Do (mm)	WALL THICKNESS (mm)	STANDARD	MATERIAL
20	26,9	2,0	EN 10216-5	2205
25	33,7	2,0	EN 10216-5	2205

REMARKS:
R17
PIPE ASSEMBLY ND20 FOR MICROPANEL A401/A4/12 SHOULD BE MARKED AND PACKED TOGETHER WITH OTHER PIPE ASSEMBLY OF MICROPANEL.



A401/A2/18



NOMINAL DIAMETER ND	OUTER DIAMETER Do (mm)	WALL THICKNESS (mm)	STANDARD	MATERIAL
20	26,9	2,0	EN 10216-5	2205
25	33,7	2,0	EN 10216-5	2205

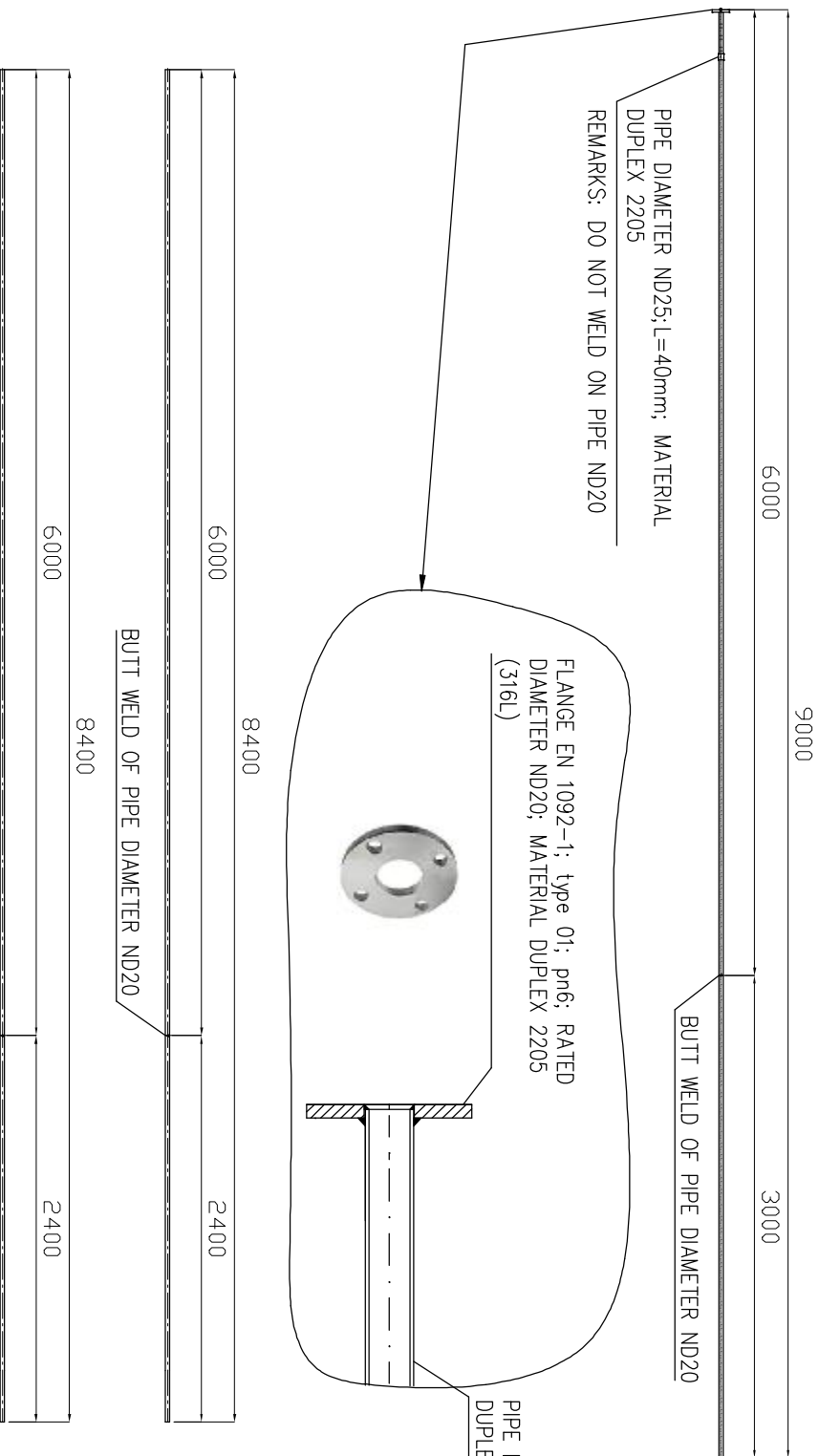
REMARKS:
PIPE ASSEMBLY ND20 FOR MICRO PANEL A401/A2/18 SHOULD BE MARKED AND PACKED TOGETHER WITH OTHER PIPE ASSEMBLY OF MICRO PANEL.

PIPE DIAMETER ND25; L=40mm; MATERIAL DUPLEX 2205
REMARKS: DO NOT WELD ON PIPE ND20

FLANGE EN 1092-1; type 01; pn6; RATED DIAMETER ND20; MATERIAL DUPLEX 2205 (316L)

PIPE DIAMETER ND20; MATERIAL DUPLEX 2205

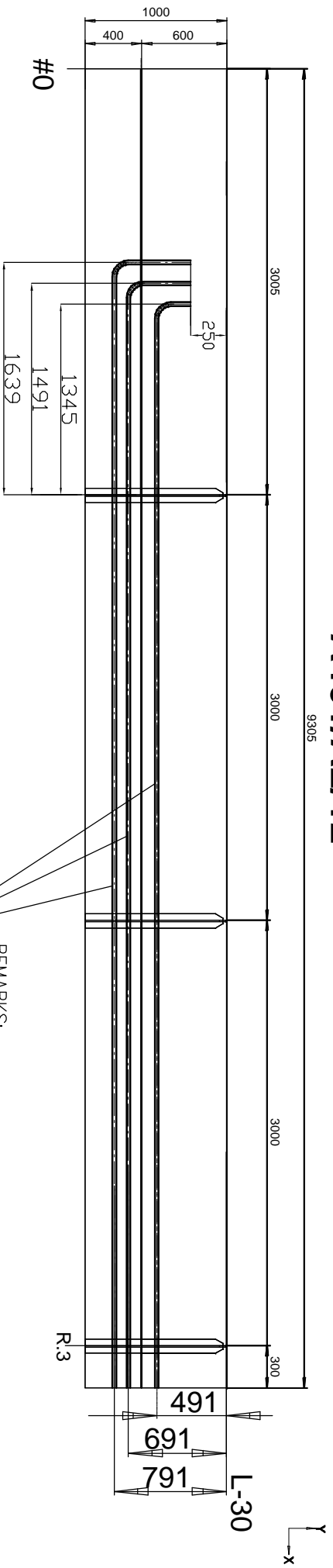
BUTT WELD OF PIPE DIAMETER ND20



BUTT WELD OF PIPE DIAMETER ND20

A401/A2/12

9305



#0

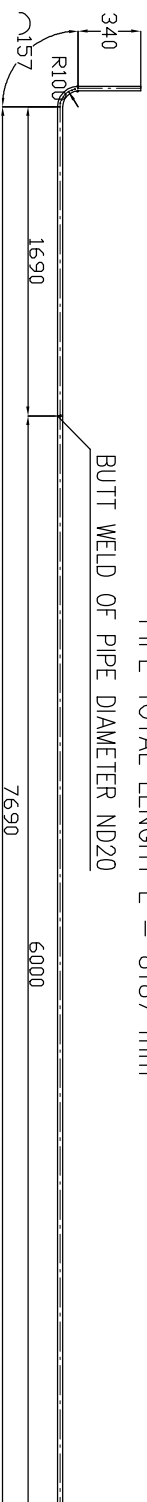
NOMINAL DIAMETER ND	OUTER DIAMETER Do (mm)	WALL THICKNESS (mm)	STANDARD	MATERIAL
20	26,9	2,0	EN 10216-5	2205
25	33,7	2,0	EN 10216-5	2205

REMARKS:
PIPE ASSEMBLY ND20 FOR MICRO-PANEL A401/A2/12 SHOULD BE MARKED AND PACKED TOGETHER WITH OTHER PIPE ASSEMBLY OF MICRO-PANEL.



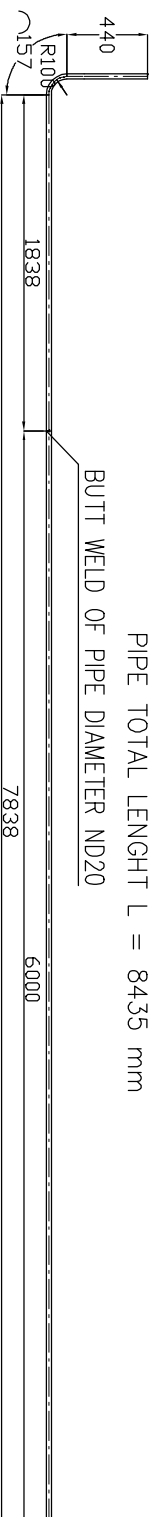
PIPE TOTAL LENGTH L = 7842 mm

BUTT WELD OF PIPE DIAMETER ND20



PIPE TOTAL LENGTH L = 8187 mm

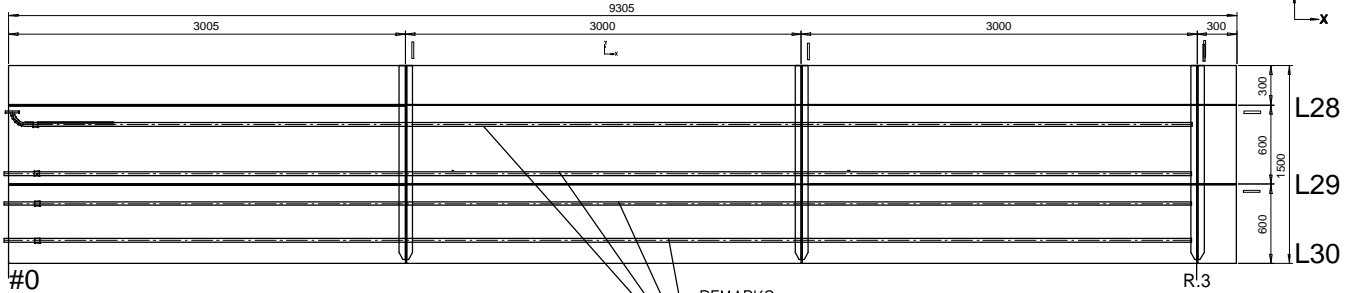
BUTT WELD OF PIPE DIAMETER ND20



PIPE TOTAL LENGTH L = 8435 mm

BUTT WELD OF PIPE DIAMETER ND20

A301/A1/13

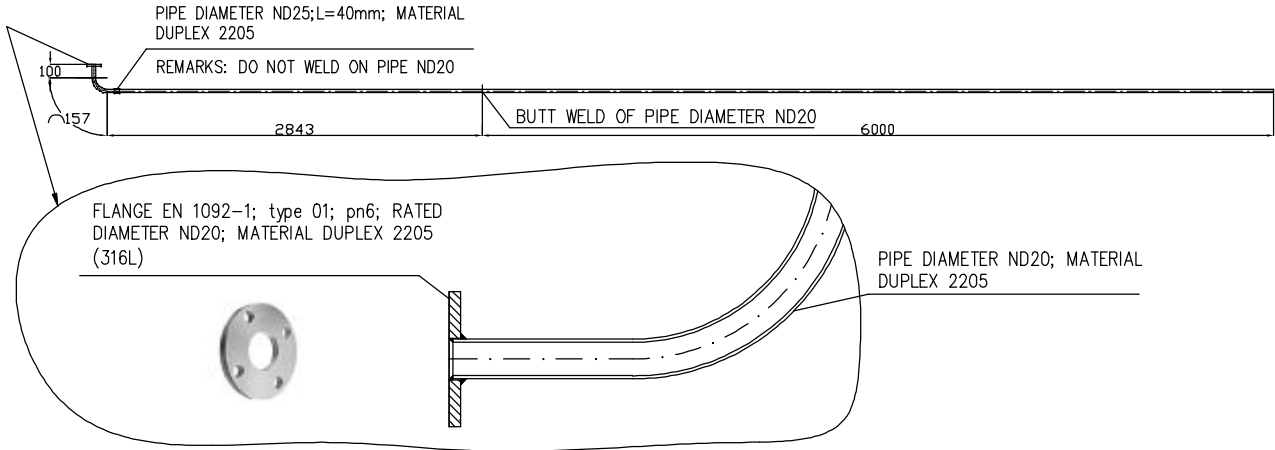


#0

NOMINAL DIAMETER ND	OUTER DIAMETER Do (mm)	WALL THICKNESS (mm)	STANDARD	MATERIAL
20	26,9	2,0	EN 10216-5	2205
25	33,7	2,0	EN 10216-5	2205

REMARKS:
PIPE ASSEMBLY ND20 FOR MICROPANEL A301/A1/13 SHOULD BE MARKED AND PACKED TOGETHER WITH OTHER PIPE ASSEMBLY OF MICROPANEL.

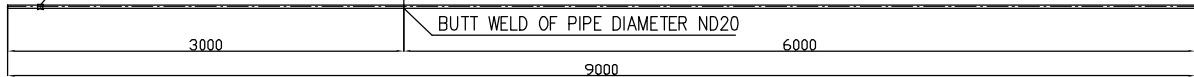
PIPE TOTAL LENGHT L = 9100 mm



PIPE DIAMETER ND25; L=40mm; MATERIAL DUPLEX 2205

PIPE TOTAL LENGHT L = 9000 mm

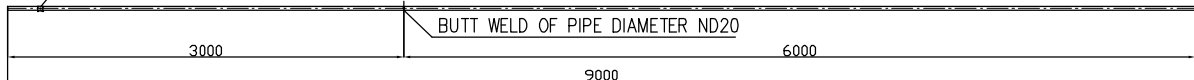
REMARKS: DO NOT WELD ON PIPE ND20



PIPE DIAMETER ND25; L=40mm; MATERIAL DUPLEX 2205

PIPE TOTAL LENGHT L = 9000 mm

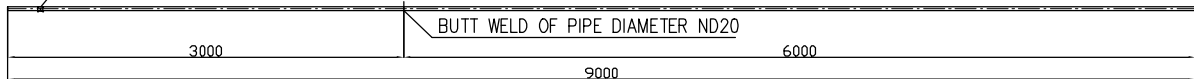
REMARKS: DO NOT WELD ON PIPE ND20



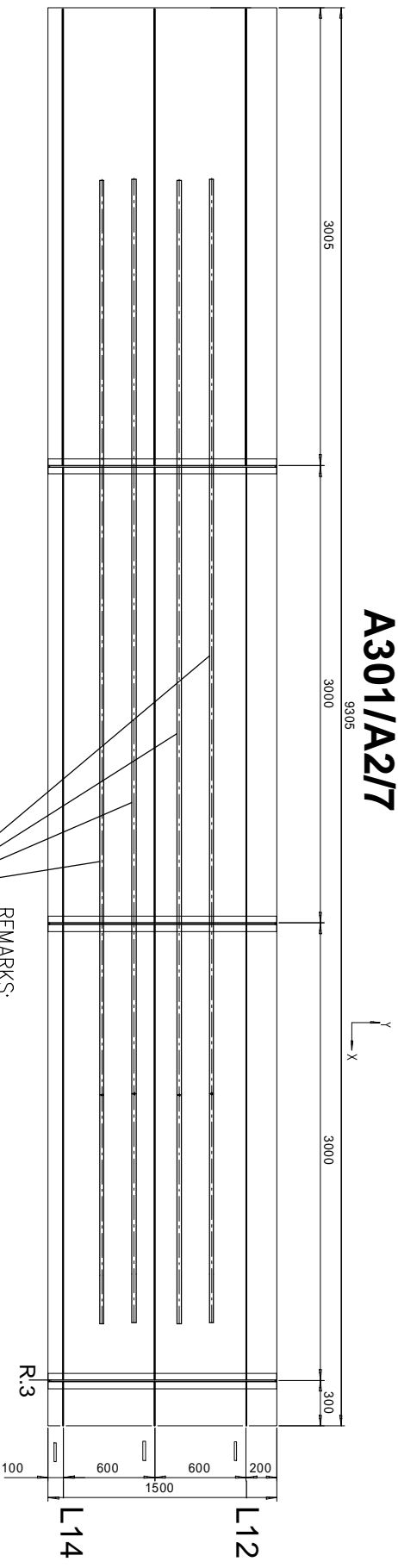
PIPE DIAMETER ND25; L=40mm; MATERIAL DUPLEX 2205

PIPE TOTAL LENGHT L = 9000 mm

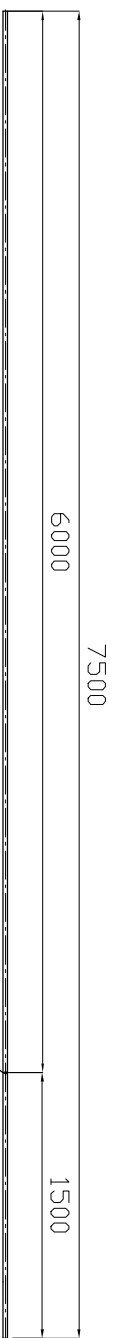
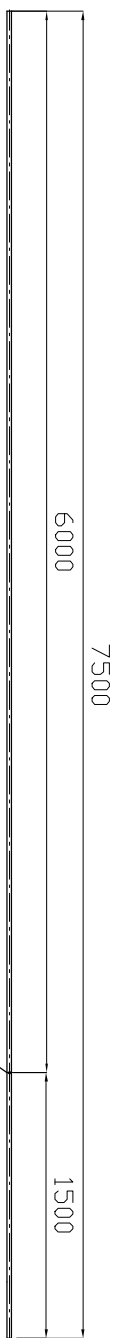
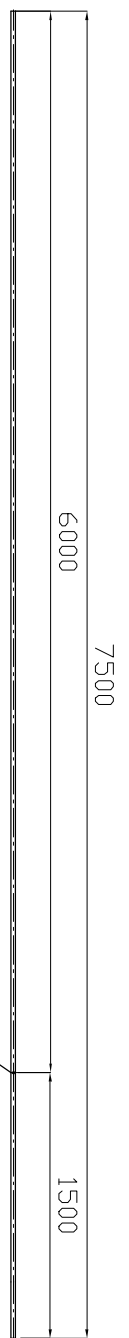
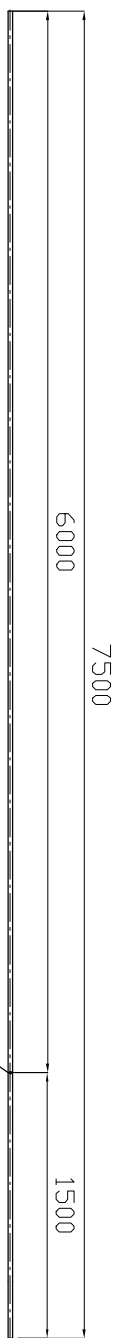
REMARKS: DO NOT WELD ON PIPE ND20



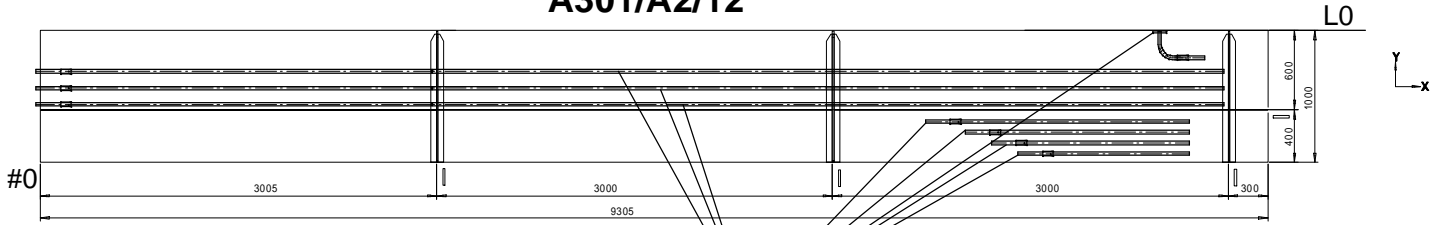
A301/A217



REMARKS:
 PIPE ASSEMBLY ND20 FOR MICROPANEL A301/A2/7 SHOULD BE MARKED
 AND PACKED TOGETHER WITH OTHER PIPE ASSEMBLY OF MICROPANEL.



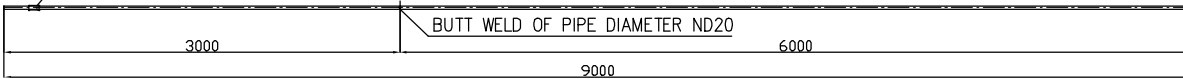
A301/A2/12



REMARKS:
 PIPE ASSEMBLY ND20 FOR MICROPANEL A301/A2/12 SHOULD BE MARKED AND PACKED TOGETHER WITH OTHER PIPE ASSEMBLY OF MICROPANEL.

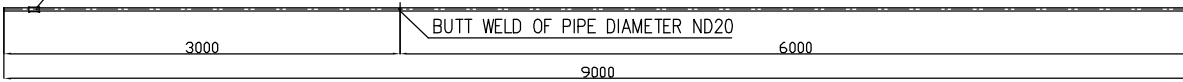
PIPE TOTAL LENGHT L = 9000 mm

PIPE DIAMETER ND25;L=80mm; MATERIAL DUPLEX 2205
 REMARKS: DO NOT WELD ON PIPE ND20



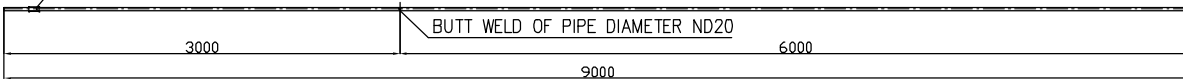
PIPE TOTAL LENGHT L = 9000 mm

PIPE DIAMETER ND25;L=80mm; MATERIAL DUPLEX 2205
 REMARKS: DO NOT WELD ON PIPE ND20



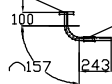
PIPE TOTAL LENGHT L = 9000 mm

PIPE DIAMETER ND25;L=80mm; MATERIAL DUPLEX 2205
 REMARKS: DO NOT WELD ON PIPE ND20



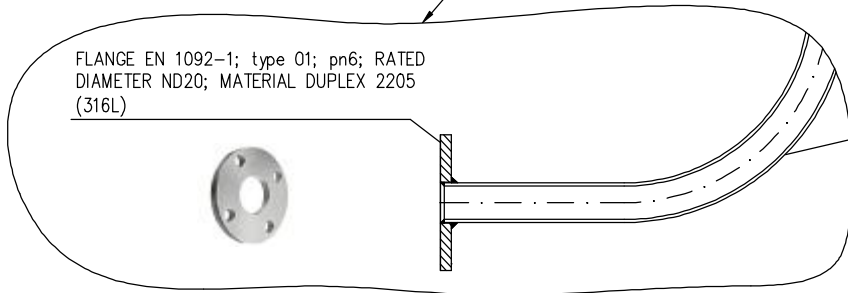
PIPE TOTAL LENGHT L = 500 mm

PIPE DIAMETER ND25;L=80mm; MATERIAL DUPLEX 2205
 REMARKS: DO NOT WELD ON PIPE ND20



FLANGE EN 1092-1; type 01; pn6; RATED DIAMETER ND20; MATERIAL DUPLEX 2205 (316L)

PIPE DIAMETER ND20; MATERIAL DUPLEX 2205



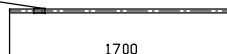
PIPE DIAMETER ND25;L=80mm; MATERIAL DUPLEX 2205 PIPE TOTAL LENGHT L = 2000 mm

REMARKS: DO NOT WELD ON PIPE ND20



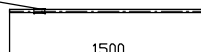
PIPE DIAMETER ND25;L=80mm; MATERIAL DUPLEX 2205 PIPE TOTAL LENGHT L = 1700 mm

REMARKS: DO NOT WELD ON PIPE ND20



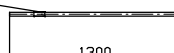
PIPE DIAMETER ND25;L=80mm; MATERIAL DUPLEX 2205 PIPE TOTAL LENGHT L = 1500 mm

REMARKS: DO NOT WELD ON PIPE ND20



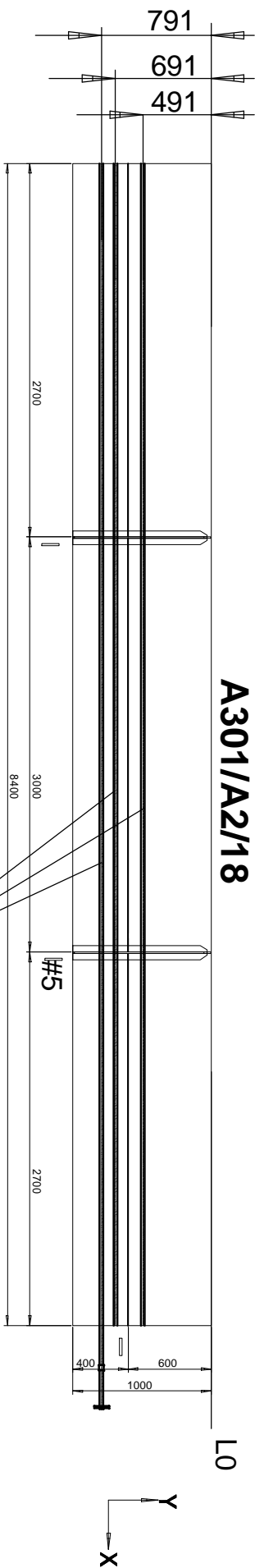
PIPE DIAMETER ND25;L=80mm; MATERIAL DUPLEX 2205 PIPE TOTAL LENGHT L = 1300 mm

REMARKS: DO NOT WELD ON PIPE ND20



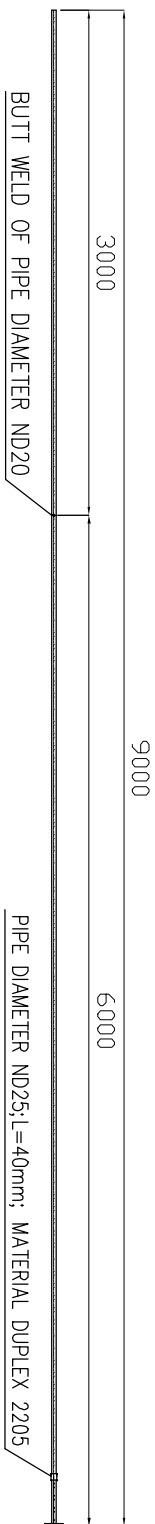
A301/A2/18

L0



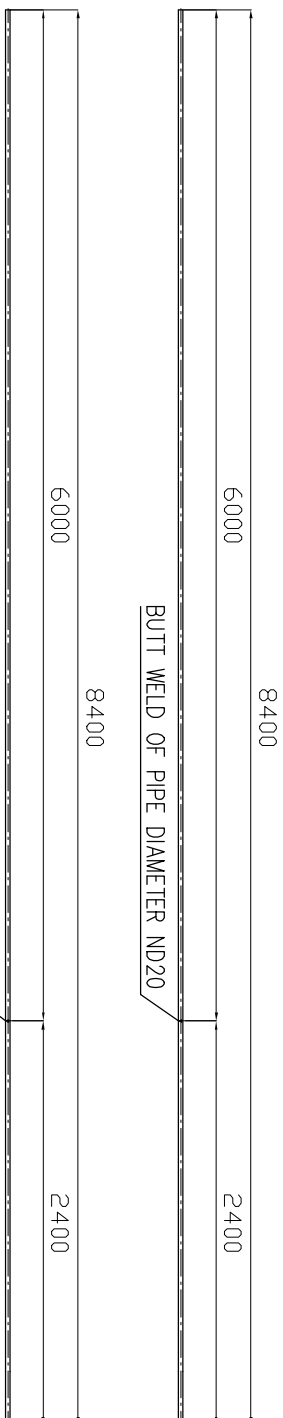
NOMINAL DIAMETER ND	OUTER DIAMETER Do (mm)	WALL THICKNESS (mm)	STANDARD	MATERIAL
20	26,9	2,0	EN 10216-5	2205
25	33,7	2,0	EN 10216-5	2205

REMARKS:
PIPE ASSEMBLY ND20 FOR MICROPANEL A301/A2/18 SHOULD BE MARKED AND PACKED TOGETHER WITH OTHER PIPE ASSEMBLY OF MICROPANEL.



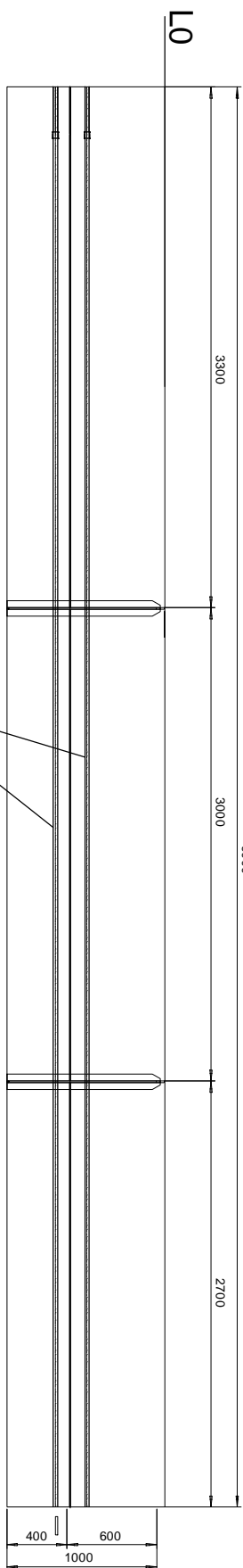
FLANGE EN 1092-1; type 01; pn6; RATED DIAMETER ND20; MATERIAL DUPLEX 2205 (316L)

PIPE DIAMETER ND20; MATERIAL DUPLEX 2205



BUTT WELD OF PIPE DIAMETER ND20

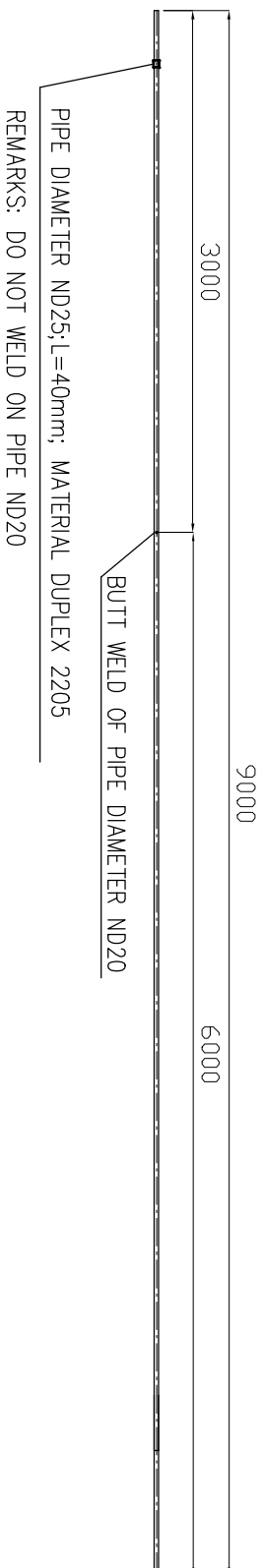
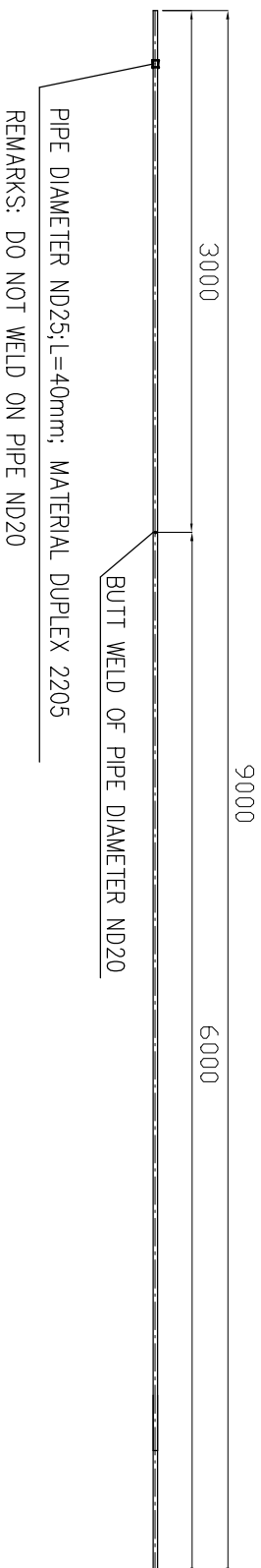
A301/A4/12



REMARKS:

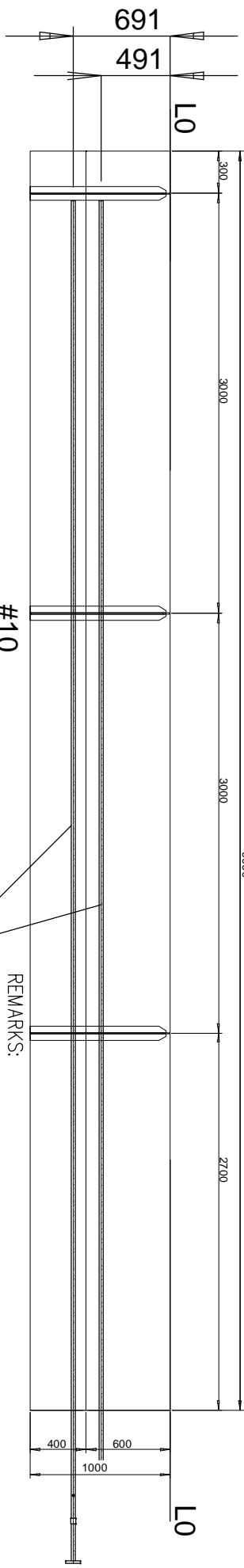
PIPE ASSEMBLY ND20 FOR MICROANEL A301/A4/12 SHOULD BE MARKED AND PACKED TOGETHER WITH OTHER PIPE ASSEMBLY OF MICROANEL.

NOMINAL DIAMETER ND	OUTER DIAMETER Do (mm)	WALL THICKNESS (mm)	STANDARD	MATERIAL
20	26,9	2,0	EN 10216-5	2205
25	33,7	2,0	EN 10216-5	2205



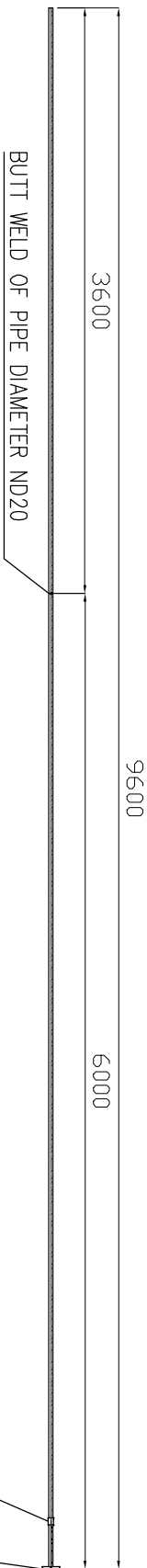
A301/A4/18

9000



#10

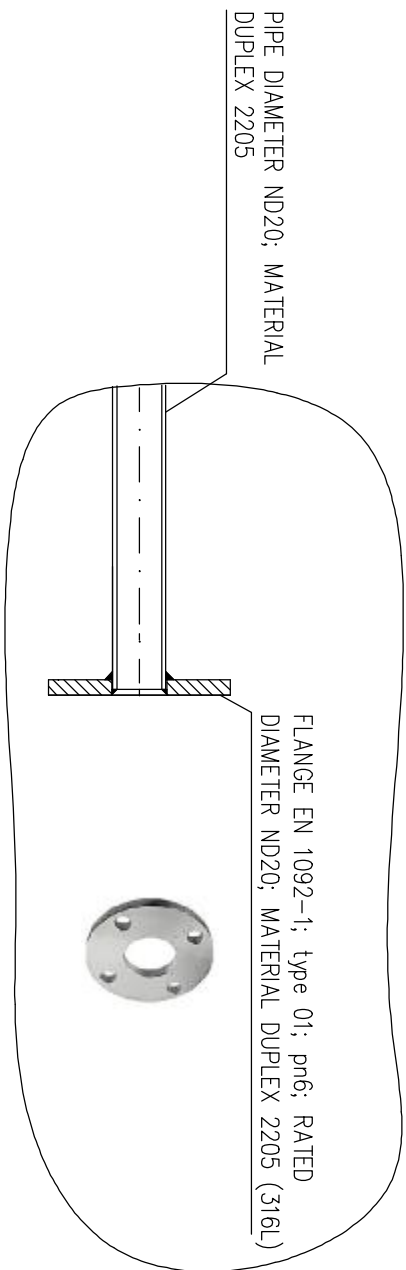
REMARKS:
PIPE ASSEMBLY ND20 FOR MICRO PANEL A301/A4/18 SHOULD BE MARKED AND PACKED TOGETHER WITH OTHER PIPE ASSEMBLY OF MICRO PANEL.



BUTT WELD OF PIPE DIAMETER ND20

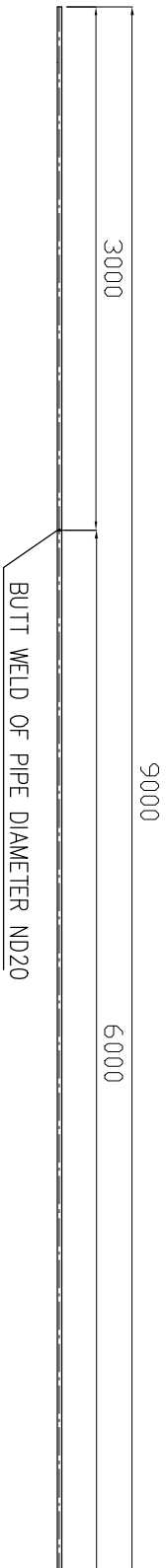
PIPE DIAMETER ND25; L=40mm; MATERIAL DUPLEX 2205

REMARKS: DO NOT WELD ON PIPE ND20



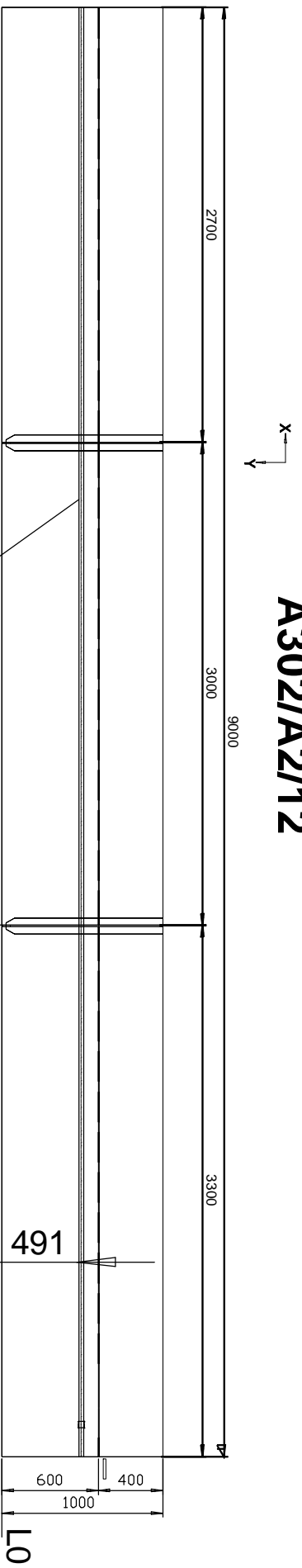
PIPE DIAMETER ND20; MATERIAL DUPLEX 2205

FLANGE EN 1092-1; type 01; pn6; RATED DIAMETER ND20; MATERIAL DUPLEX 2205 (316L)



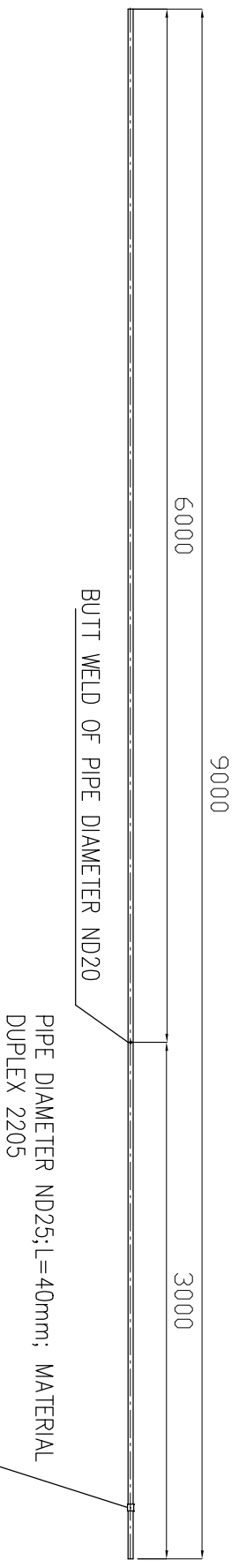
BUTT WELD OF PIPE DIAMETER ND20

A302/A2/12

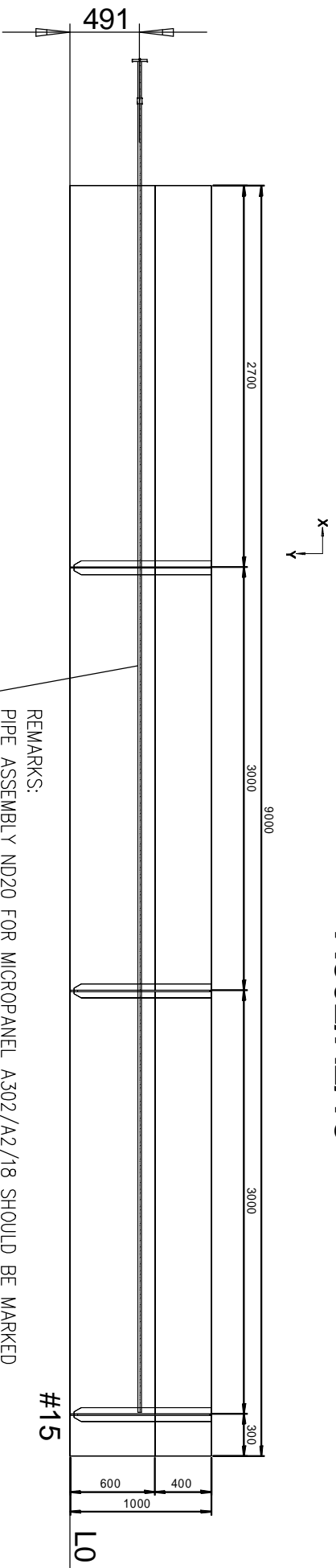


REMARKS:
 PIPE ASSEMBLY ND20 FOR MICRO PANEL A302/A2/12 SHOULD BE MARKED AND PACKED TOGETHER WITH OTHER PIPE ASSEMBLY OF MICRO PANEL.

NOMINAL DIAMETER ND	OUTER DIAMETER Do (mm)	WALL THICKNESS (mm)	STANDARD	MATERIAL
20	26,9	2,0	EN 10216-5	2205
25	33,7	2,0	EN 10216-5	2205



A302/A2/18



REMARKS:
 PIPE ASSEMBLY ND20 FOR MICROPANEL A302/A2/18 SHOULD BE MARKED AND PACKED TOGETHER WITH OTHER PIPE ASSEMBLY OF MICROPANEL.

NOMINAL DIAMETER ND	OUTER DIAMETER Do (mm)	WALL THICKNESS (mm)	STANDARD	MATERIAL
20	26,9	2,0	EN 10216-5	2205
25	33,7	2,0	EN 10216-5	2205

