


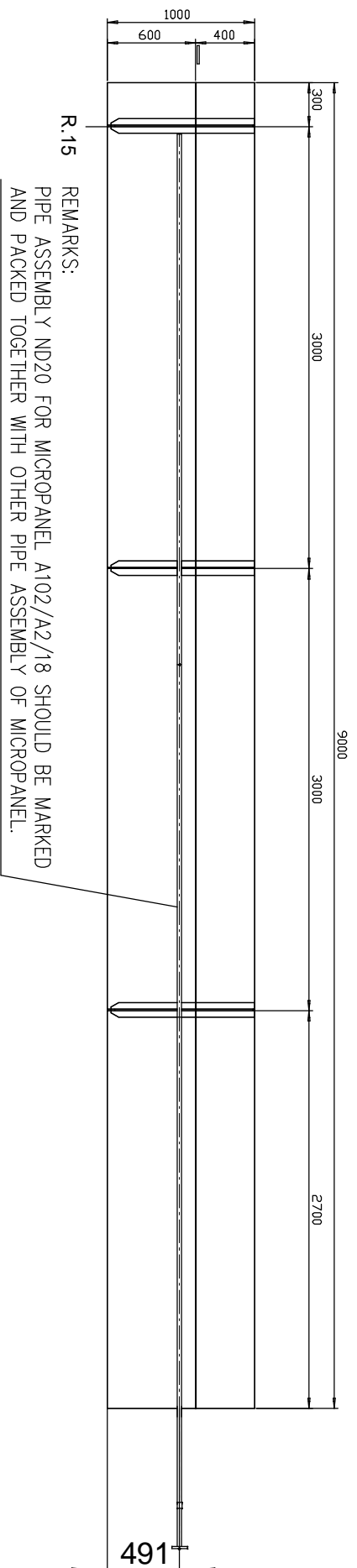
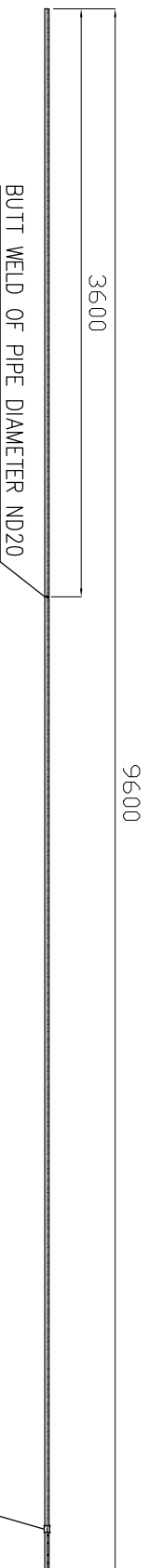


7	6	5	4	3	2	1																																																																	
E						E																																																																	
D						D																																																																	
C						C																																																																	
B	<table border="1"> <tr> <td data-bbox="534 1220 550 1321">Izmena Revision</td> <td data-bbox="502 1220 534 1321"></td> <td data-bbox="502 1321 534 1512">Opis Description</td> <td data-bbox="502 1512 534 1601">Datum Date</td> <td data-bbox="502 1601 534 1691">Ime Name</td> </tr> <tr> <td colspan="5">NACIONALNE VLASTI/FLAG STATE AUTHORITIES</td> </tr> <tr> <td colspan="5">KLASIFIKACIJSKO DRUŠTVO/CLASSIF. SOCIETY</td> </tr> <tr> <td colspan="5">VLASNIK/OWNER</td> </tr> <tr> <td colspan="2">Odobreno od/Approved by</td> <td colspan="3">Dopis broj/Letter No.</td> </tr> <tr> <td data-bbox="343 1220 359 1321">Datum Date</td> <td data-bbox="343 1321 359 1512">Ime Name</td> <td data-bbox="343 1512 359 1601">Potpis Signature</td> <td data-bbox="343 1601 359 1691">Designer</td> <td data-bbox="343 1691 359 2128">Veza na crt./Connecting dwg.</td> </tr> <tr> <td data-bbox="327 1220 343 1321">Izradio Designed by</td> <td data-bbox="327 1321 343 1512">08.2023</td> <td data-bbox="327 1512 343 1601">Zoran Došenović</td> <td data-bbox="327 1601 343 1691">BIS PROJEKTI NI URED - SPLIT DIV GRUPA d.o.o.</td> <td data-bbox="327 1691 343 2128"></td> </tr> <tr> <td data-bbox="279 1220 295 1321">Prepared Checked by</td> <td data-bbox="279 1321 295 1512">08.2023</td> <td data-bbox="279 1512 295 1601">Miloš Mikić</td> <td data-bbox="247 1601 327 1736">    <b>BRODOSPLUT</b>  <small>INŽENJERSKA AGENCIJA ZA VEŠTAČENJE I PROJEKTOVANJE</small> </td> <td data-bbox="279 1736 295 2128">NOV / NB 841</td> </tr> <tr> <td data-bbox="247 1220 263 1321">Checked by</td> <td data-bbox="247 1321 263 1512">08.2023</td> <td data-bbox="247 1512 263 1601">Miloš Mikić</td> <td data-bbox="247 1601 263 1691">Yard:</td> <td data-bbox="247 1691 263 2128">Klasif. broj/Dwg No</td> </tr> <tr> <td data-bbox="231 1220 247 1321">Odobrio Head of project</td> <td data-bbox="231 1321 247 1512">08.2023</td> <td data-bbox="231 1512 247 1601">Miloš Mikić</td> <td data-bbox="231 1601 247 2128">Naziv na crtu/Drawing title</td> <td data-bbox="199 1736 231 1848">PR. / PROJECT IRI 12</td> </tr> <tr> <td data-bbox="215 1220 231 1321">Mjerilo/Scale</td> <td colspan="3" data-bbox="215 1321 231 2128"> <b>PIPELINE POSITION ON PLATFORM ASSEMBLIES - GROUP 101, 102, 201, 202</b> </td> <td data-bbox="199 1848 231 1960">Listova/Pgs A + 14</td> </tr> <tr> <td data-bbox="199 1220 215 1321"></td> <td data-bbox="199 1321 215 2128"></td> <td data-bbox="199 1512 215 1601"></td> <td data-bbox="199 1601 215 1691"></td> <td data-bbox="199 1691 215 1848">List/Pg A</td> </tr> <tr> <td data-bbox="183 1220 199 1321"></td> <td data-bbox="183 1321 199 2128"></td> <td data-bbox="183 1512 199 1601"></td> <td data-bbox="183 1601 199 1691"></td> <td data-bbox="183 1691 199 2128">Ident broj/Req No</td> </tr> </table>					Izmena Revision		Opis Description	Datum Date	Ime Name	NACIONALNE VLASTI/FLAG STATE AUTHORITIES					KLASIFIKACIJSKO DRUŠTVO/CLASSIF. SOCIETY					VLASNIK/OWNER					Odobreno od/Approved by		Dopis broj/Letter No.			Datum Date	Ime Name	Potpis Signature	Designer	Veza na crt./Connecting dwg.	Izradio Designed by	08.2023	Zoran Došenović	BIS PROJEKTI NI URED - SPLIT DIV GRUPA d.o.o.		Prepared Checked by	08.2023	Miloš Mikić	 <b>BRODOSPLUT</b> <small>INŽENJERSKA AGENCIJA ZA VEŠTAČENJE I PROJEKTOVANJE</small>	NOV / NB 841	Checked by	08.2023	Miloš Mikić	Yard:	Klasif. broj/Dwg No	Odobrio Head of project	08.2023	Miloš Mikić	Naziv na crtu/Drawing title	PR. / PROJECT IRI 12	Mjerilo/Scale	<b>PIPELINE POSITION ON PLATFORM ASSEMBLIES - GROUP 101, 102, 201, 202</b>			Listova/Pgs A + 14					List/Pg A					Ident broj/Req No	B
Izmena Revision		Opis Description	Datum Date	Ime Name																																																																			
NACIONALNE VLASTI/FLAG STATE AUTHORITIES																																																																							
KLASIFIKACIJSKO DRUŠTVO/CLASSIF. SOCIETY																																																																							
VLASNIK/OWNER																																																																							
Odobreno od/Approved by		Dopis broj/Letter No.																																																																					
Datum Date	Ime Name	Potpis Signature	Designer	Veza na crt./Connecting dwg.																																																																			
Izradio Designed by	08.2023	Zoran Došenović	BIS PROJEKTI NI URED - SPLIT DIV GRUPA d.o.o.																																																																				
Prepared Checked by	08.2023	Miloš Mikić	 <b>BRODOSPLUT</b> <small>INŽENJERSKA AGENCIJA ZA VEŠTAČENJE I PROJEKTOVANJE</small>	NOV / NB 841																																																																			
Checked by	08.2023	Miloš Mikić	Yard:	Klasif. broj/Dwg No																																																																			
Odobrio Head of project	08.2023	Miloš Mikić	Naziv na crtu/Drawing title	PR. / PROJECT IRI 12																																																																			
Mjerilo/Scale	<b>PIPELINE POSITION ON PLATFORM ASSEMBLIES - GROUP 101, 102, 201, 202</b>			Listova/Pgs A + 14																																																																			
				List/Pg A																																																																			
				Ident broj/Req No																																																																			
A						A																																																																	
7	6	5	4	3	2	1																																																																	

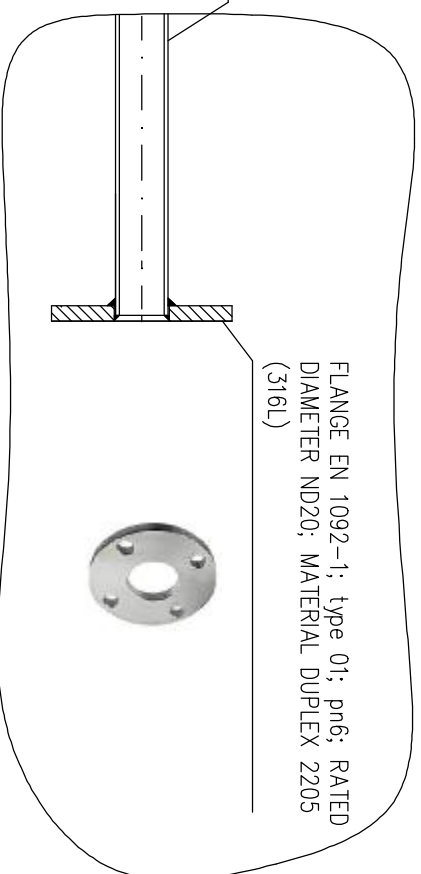
# A102/A2/18



NOMINAL DIAMETER ND	OUTER DIAMETER Do (mm)	WALL THICKNESS (mm)	STANDARD	MATERIAL
20	26,9	2,0	EN 10216-5	2205
25	33,7	2,0	EN 10216-5	2205

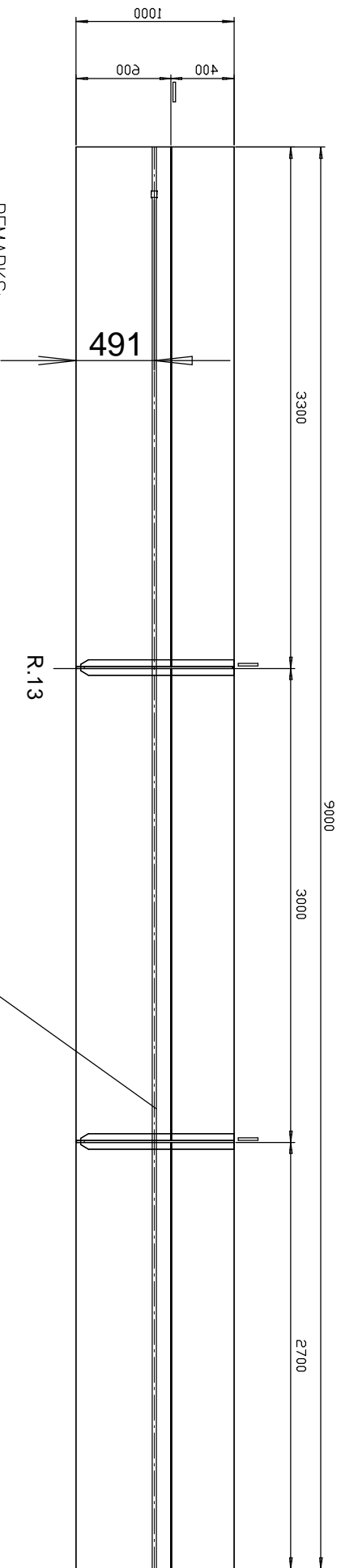


PIPE DIAMETER ND20; MATERIAL DUPLEX 2205



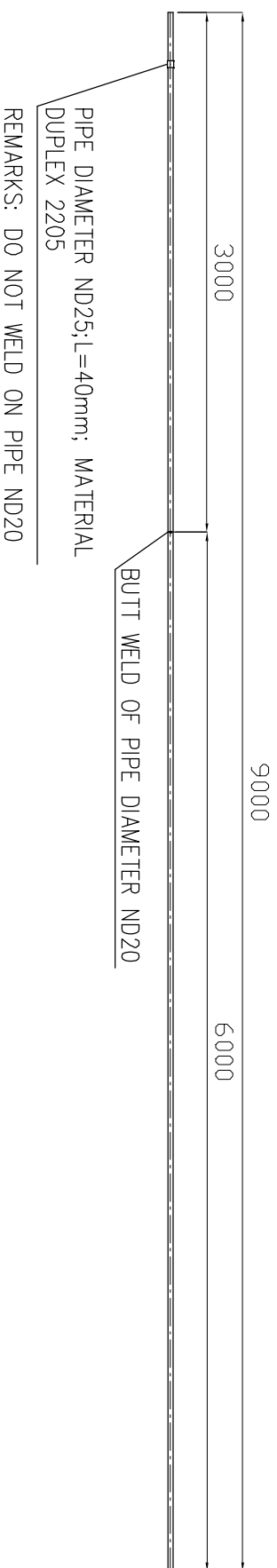
PIPE DIAMETER ND25; L=40mm; MATERIAL DUPLEX 2205  
 REMARKS: DO NOT WELD ON PIPE ND20

# A102/A2/12



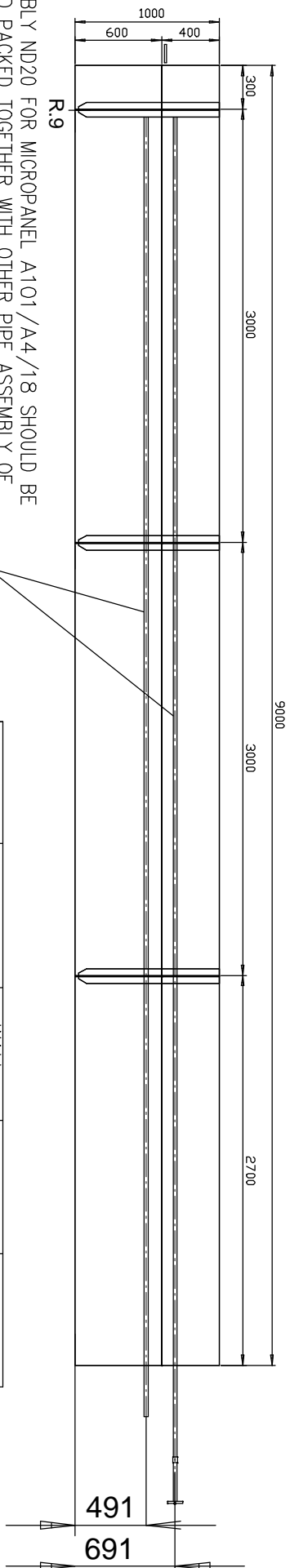
REMARKS:  
 PIPE ASSEMBLY ND20 FOR MICRO PANEL A102/A2/12 SHOULD BE MARKED  
 AND PACKED TOGETHER WITH OTHER PIPE ASSEMBLY OF MICRO PANEL.

NOMINAL DIAMETER ND	OUTER DIAMETER Do (mm)	WALL THICKNESS (mm)	STANDARD	MATERIAL
20	26,9	2,0	EN 10216-5	2205
25	33,7	2,0	EN 10216-5	2205



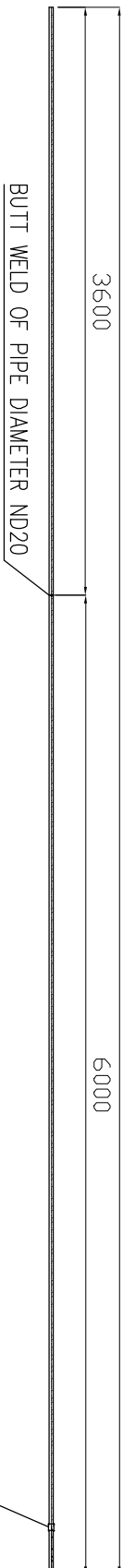
PIPE DIAMETER ND25; L=40mm; MATERIAL  
 DUPLEX 2205  
 REMARKS: DO NOT WELD ON PIPE ND20

# A101/A4/18



REMARKS:  
 PIPE ASSEMBLY ND20 FOR MICROPANEL A101/A4/18 SHOULD BE  
 MARKED AND PACKED TOGETHER WITH OTHER PIPE ASSEMBLY OF  
 MICROPANEL.

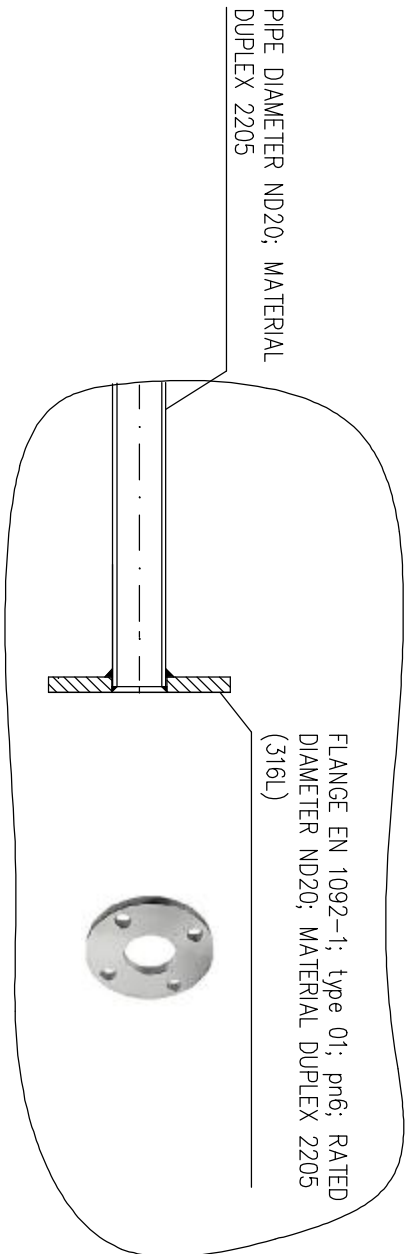
NOMINAL DIAMETER ND	OUTER DIAMETER Do (mm)	WALL THICKNESS (mm)	STANDARD	MATERIAL
20	26,9	2,0	EN 10216-5	2205
25	33,7	2,0	EN 10216-5	2205



BUTT WELD OF PIPE DIAMETER ND20

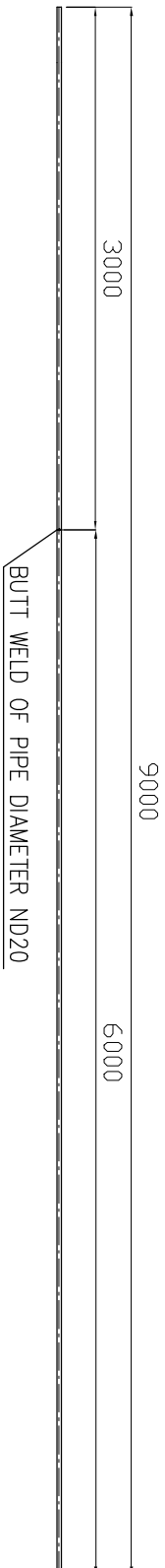
PIPE DIAMETER ND25; L=40mm; MATERIAL  
 DUPLEX 2205

REMARKS: DO NOT WELD ON PIPE ND20



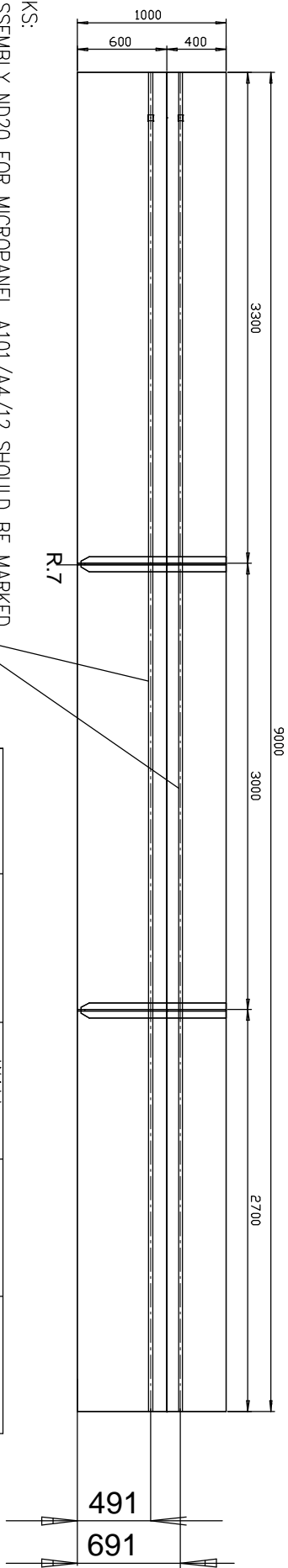
FLANGE EN 1092-1; type 01; pn6; RATED  
 DIAMETER ND20; MATERIAL DUPLEX 2205  
 (316L)

PIPE DIAMETER ND20; MATERIAL  
 DUPLEX 2205



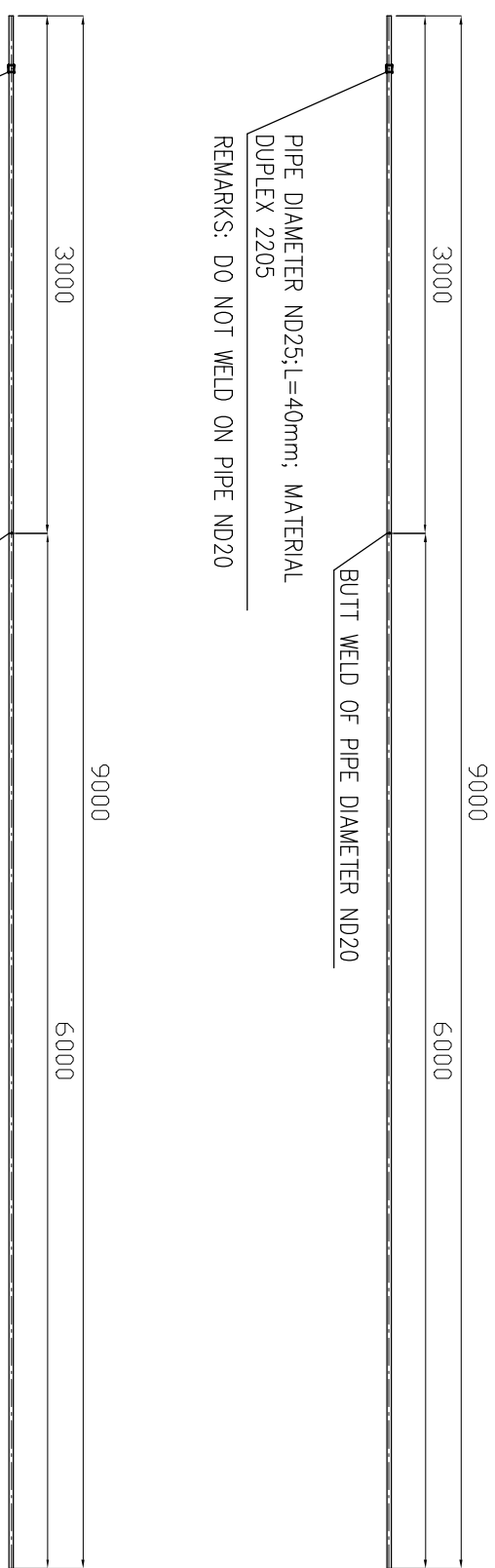
BUTT WELD OF PIPE DIAMETER ND20

# A101/A4/12



REMARKS:  
 PIPE ASSEMBLY ND20 FOR MICROPANEL A101/A4/12 SHOULD BE MARKED AND PACKED TOGETHER WITH OTHER PIPE ASSEMBLY OF MICROPANEL.

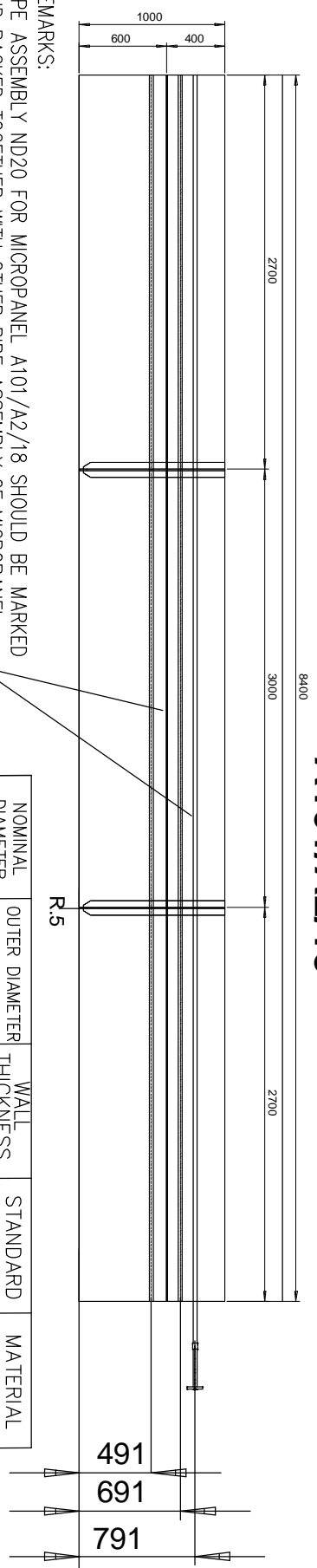
NOMINAL DIAMETER ND	OUTER DIAMETER Do (mm)	WALL THICKNESS (mm)	STANDARD	MATERIAL
20	26,9	2,0	EN 10216-5	2205
25	33,7	2,0	EN 10216-5	2205



PIPE DIAMETER ND25; L=40mm; MATERIAL DUPLEX 2205  
 REMARKS: DO NOT WELD ON PIPE ND20

PIPE DIAMETER ND25; L=40mm; MATERIAL DUPLEX 2205  
 REMARKS: DO NOT WELD ON PIPE ND20

# A101/A2/18



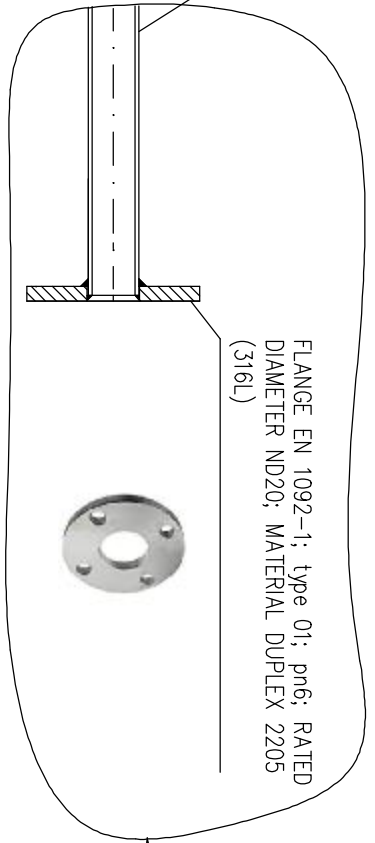
REMARKS:  
PIPE ASSEMBLY ND20 FOR MICRO PANEL A101/A2/18 SHOULD BE MARKED AND PACKED TOGETHER WITH OTHER PIPE ASSEMBLY OF MICRO PANEL.

NOMINAL DIAMETER ND	OUTER DIAMETER Do (mm)	WALL THICKNESS (mm)	STANDARD	MATERIAL
20	26,9	2,0	EN 10216-5	2205
25	33,7	2,0	EN 10216-5	2205

9000  
6000

BUTT WELD OF PIPE DIAMETER ND20

PIPE DIAMETER ND20; MATERIAL DUPLEX 2205



PIPE DIAMETER ND25; L=40mm; MATERIAL DUPLEX 2205  
REMARKS: DO NOT WELD ON PIPE ND20

8400

2400

BUTT WELD OF PIPE DIAMETER ND20

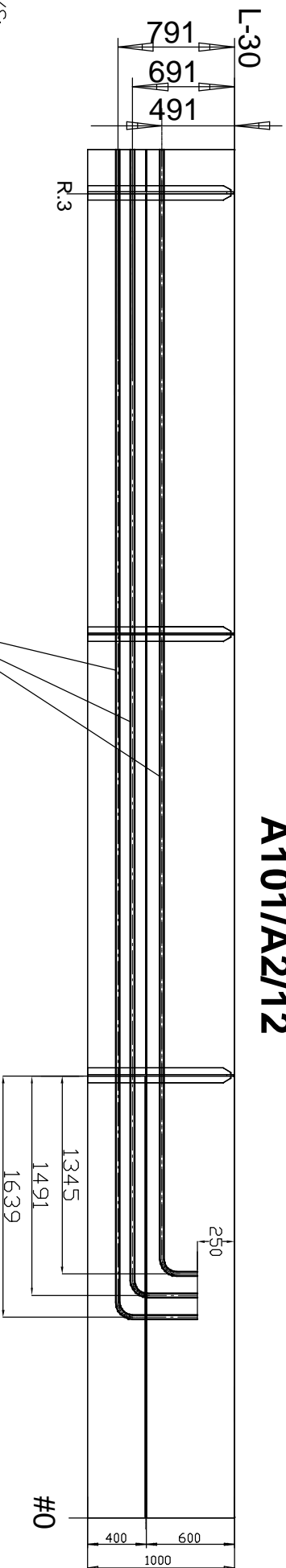
8400

2400

BUTT WELD OF PIPE DIAMETER ND20

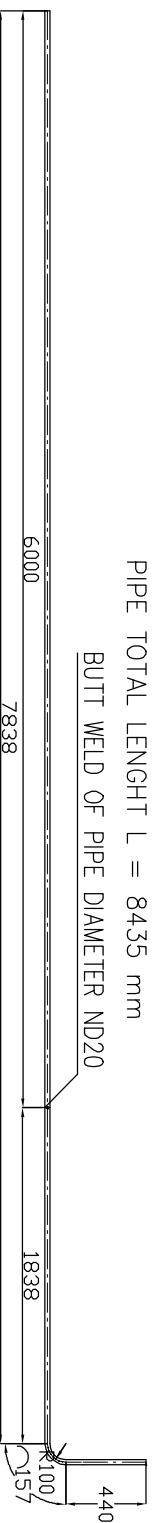
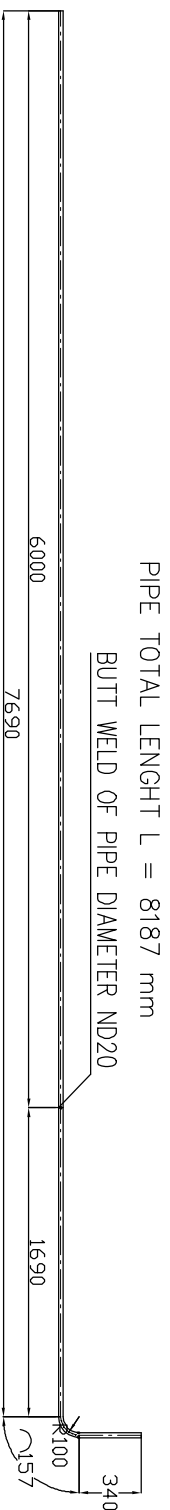
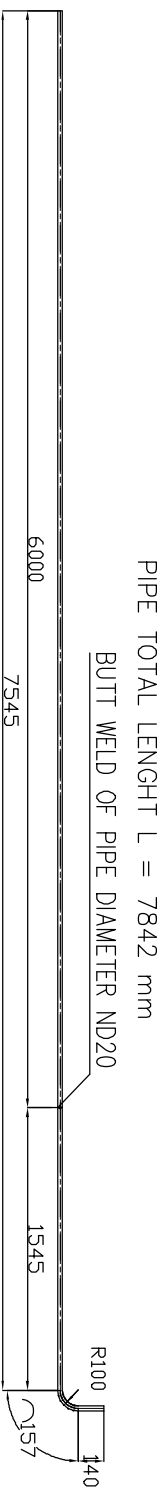
6000

# A101/A2/12

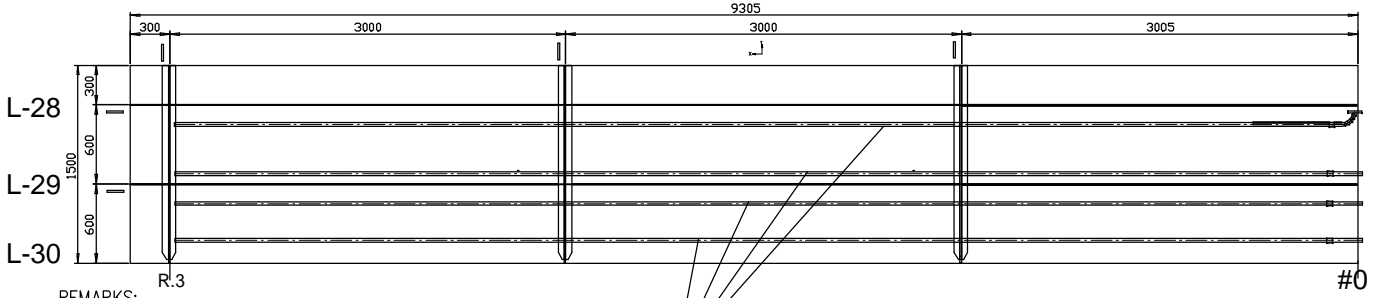


REMARKS:  
 PIPE ASSEMBLY ND20 FOR MICRO PANEL A101/A2/12 SHOULD BE MARKED  
 AND PACKED TOGETHER WITH OTHER PIPE ASSEMBLY OF MICRO PANEL.

NOMINAL DIAMETER ND	OUTER DIAMETER Do (mm)	WALL THICKNESS (mm)	STANDARD	MATERIAL
20	26,9	2,0	EN 10216-5	2205
25	33,7	2,0	EN 10216-5	2205



# A201/A1/13



REMARKS:  
PIPE ASSEMBLY ND20 FOR MICROPANEL A201/A1/13 SHOULD BE MARKED AND PACKED TOGETHER WITH OTHER PIPE ASSEMBLY OF MICROPANEL.

NOMINAL DIAMETER ND	OUTER DIAMETER Do (mm)	WALL THICKNESS (mm)	STANDARD	MATERIAL
20	26,9	2,0	EN 10216-5	2205
25	33,7	2,0	EN 10216-5	2205

PIPE TOTAL LENGHT L = 9100 mm

PIPE DIAMETER ND25;L=40mm; MATERIAL DUPLEX 2205

REMARKS: DO NOT WELD ON PIPE ND20



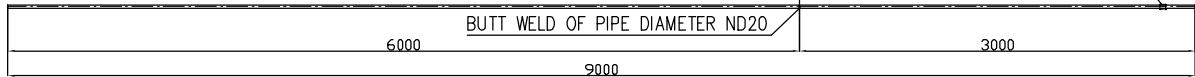
PIPE DIAMETER ND20; MATERIAL DUPLEX 2205

FLANGE EN 1092-1; type 01; pn6; RATED DIAMETER ND20; MATERIAL DUPLEX 2205 (316L)

PIPE TOTAL LENGHT L = 9000 mm

PIPE DIAMETER ND25;L=40mm; MATERIAL DUPLEX 2205

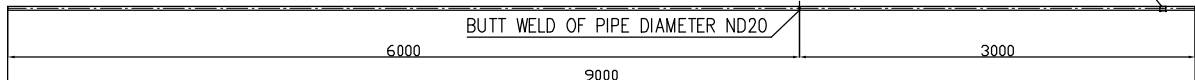
REMARKS: DO NOT WELD ON PIPE ND20



PIPE TOTAL LENGHT L = 9000 mm

PIPE DIAMETER ND25;L=40mm; MATERIAL DUPLEX 2205

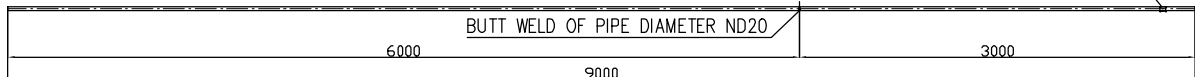
REMARKS: DO NOT WELD ON PIPE ND20



PIPE TOTAL LENGHT L = 9000 mm

PIPE DIAMETER ND25;L=40mm; MATERIAL DUPLEX 2205

REMARKS: DO NOT WELD ON PIPE ND20





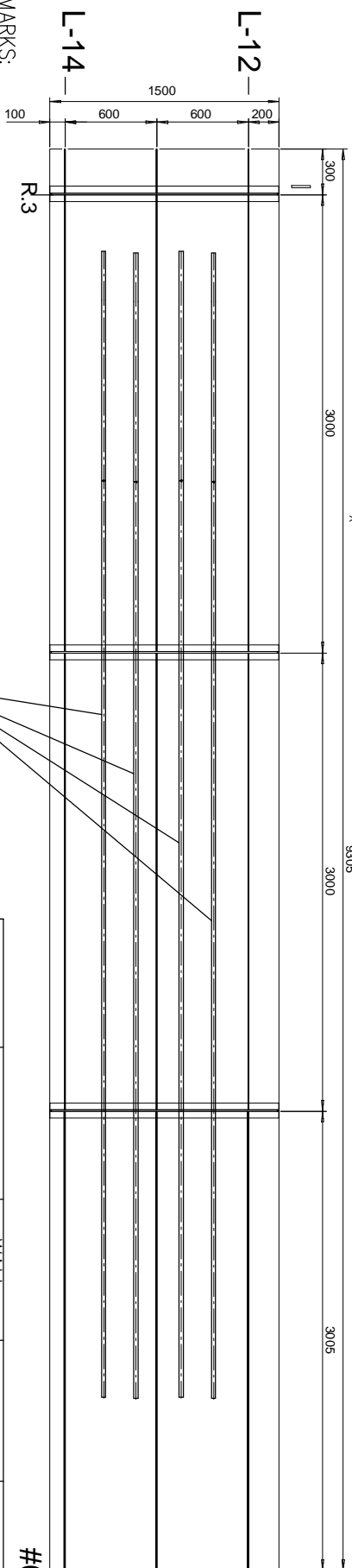
# A201/A2/7

9305

3000

3000

3005



REMARKS:  
PIPE ASSEMBLY ND20 FOR MICROPANEL A201/A2/7 SHOULD BE MARKED AND PACKED TOGETHER WITH OTHER PIPE ASSEMBLY OF MICROPANEL.

NOMINAL DIAMETER ND	OUTER DIAMETER Do (mm)	WALL THICKNESS (mm)	STANDARD	MATERIAL
20	26,9	2,0	EN 10216-5	2205

PIPE TOTAL LENGTH L = 7500 mm

7500

1500

6000

BUTT WELD OF PIPE DIAMETER ND20

7500

1500

6000

BUTT WELD OF PIPE DIAMETER ND20

7500

1500

6000

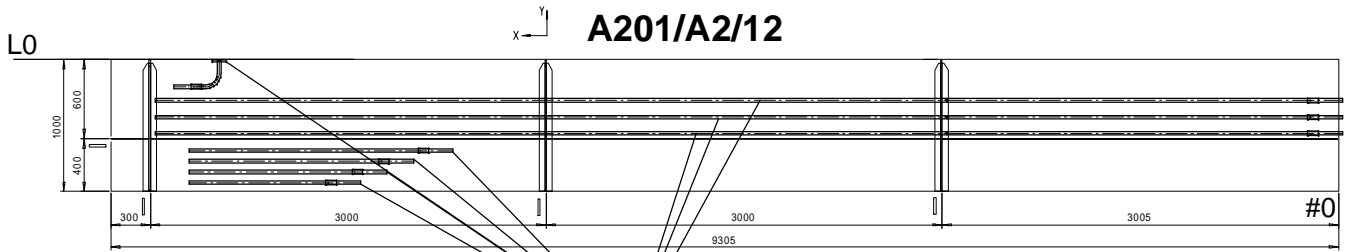
BUTT WELD OF PIPE DIAMETER ND20

7500

1500

6000

BUTT WELD OF PIPE DIAMETER ND20

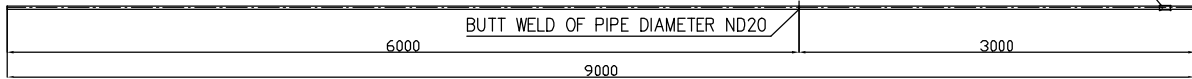


REMARKS:  
 PIPE ASSEMBLY ND20 FOR MICROPANEL A201/A2/12 SHOULD BE MARKED  
 AND PACKED TOGETHER WITH OTHER PIPE ASSEMBLY OF MICROPANEL.

NOMINAL DIAMETER ND	OUTER DIAMETER Do (mm)	WALL THICKNESS (mm)	STANDARD	MATERIAL
20	26,9	2,0	EN 10216-5	2205
25	33,7	2,0	EN 10216-5	2205

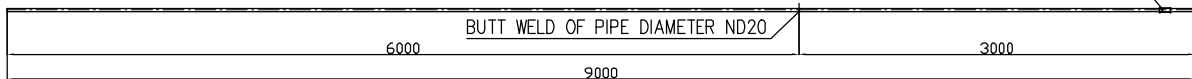
PIPE TOTAL LENGHT L = 9000 mm

PIPE DIAMETER ND25;L=80mm; MATERIAL DUPLEX 2205  
 REMARKS: DO NOT WELD ON PIPE ND20



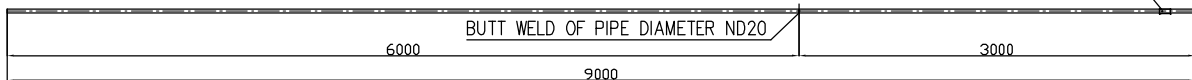
PIPE TOTAL LENGHT L = 9000 mm

PIPE DIAMETER ND25;L=80mm; MATERIAL DUPLEX 2205  
 REMARKS: DO NOT WELD ON PIPE ND20



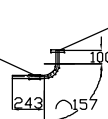
PIPE TOTAL LENGHT L = 9000 mm

PIPE DIAMETER ND25;L=80mm; MATERIAL DUPLEX 2205  
 REMARKS: DO NOT WELD ON PIPE ND20



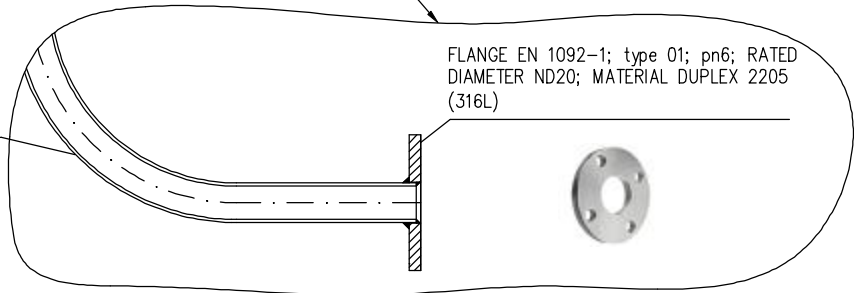
PIPE TOTAL LENGHT L = 500 mm

PIPE DIAMETER ND25;L=80mm; MATERIAL DUPLEX 2205  
 REMARKS: DO NOT WELD ON PIPE ND20



PIPE DIAMETER ND20; MATERIAL DUPLEX 2205

FLANGE EN 1092-1; type 01; pn6; RATED DIAMETER ND20; MATERIAL DUPLEX 2205 (316L)



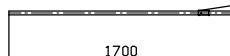
PIPE TOTAL LENGHT L = 2000 mm

PIPE DIAMETER ND25;L=80mm; MATERIAL DUPLEX 2205  
 REMARKS: DO NOT WELD ON PIPE ND20



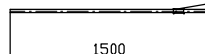
PIPE TOTAL LENGHT L = 1700 mm

PIPE DIAMETER ND25;L=80mm; MATERIAL DUPLEX 2205  
 REMARKS: DO NOT WELD ON PIPE ND20



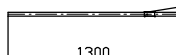
PIPE TOTAL LENGHT L = 1500 mm

PIPE DIAMETER ND25;L=80mm; MATERIAL DUPLEX 2205  
 REMARKS: DO NOT WELD ON PIPE ND20



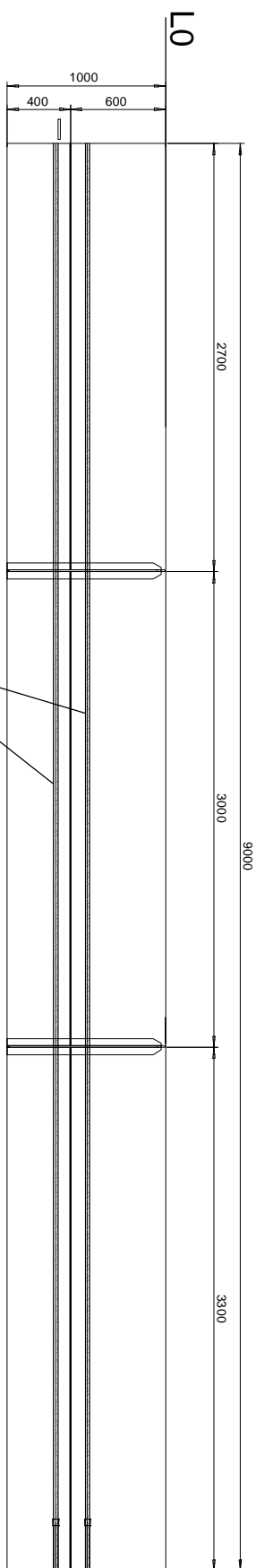
PIPE TOTAL LENGHT L = 1300 mm

PIPE DIAMETER ND25;L=80mm; MATERIAL DUPLEX 2205  
 REMARKS: DO NOT WELD ON PIPE ND20



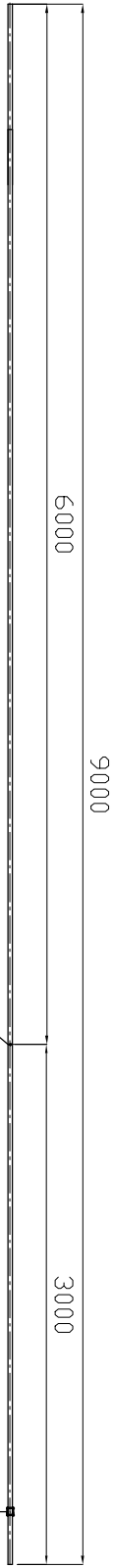


# A201/A4/12

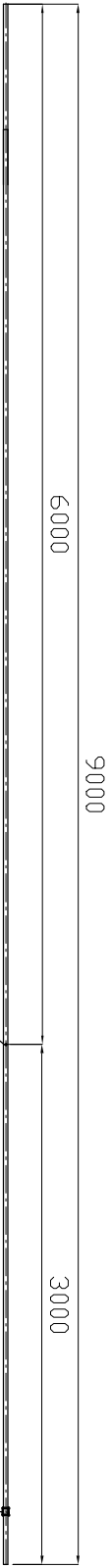


REMARKS:  
 PIPE ASSEMBLY ND20 FOR MICROPANEL A201/A4/12 SHOULD BE MARKED  
 AND PACKED TOGETHER WITH OTHER PIPE ASSEMBLY OF MICROPANEL.

NOMINAL DIAMETER ND	OUTER DIAMETER Do (mm)	WALL THICKNESS (mm)	STANDARD	MATERIAL
20	26,9	2,0	EN 10216-5	2205
25	33,7	2,0	EN 10216-5	2205



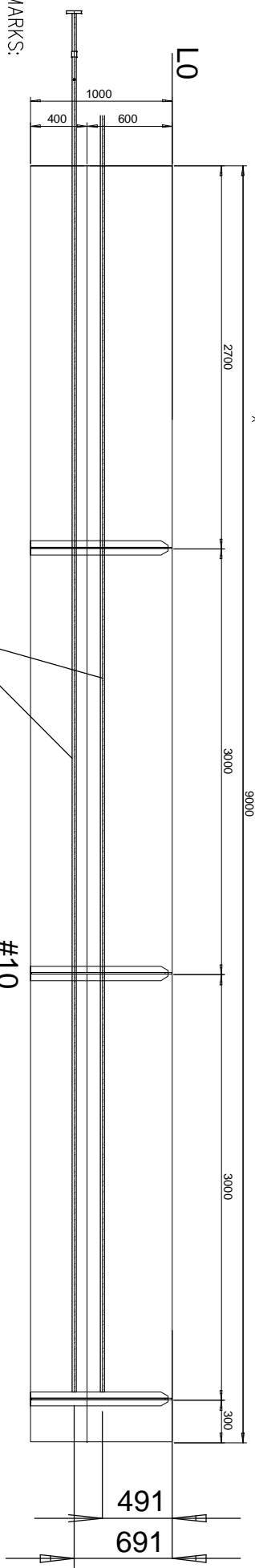
PIPE DIAMETER ND25; L=40mm; MATERIAL DUPLEX 2205  
 REMARKS: DO NOT WELD ON PIPE ND20



PIPE DIAMETER ND25; L=40mm; MATERIAL DUPLEX 2205  
 REMARKS: DO NOT WELD ON PIPE ND20

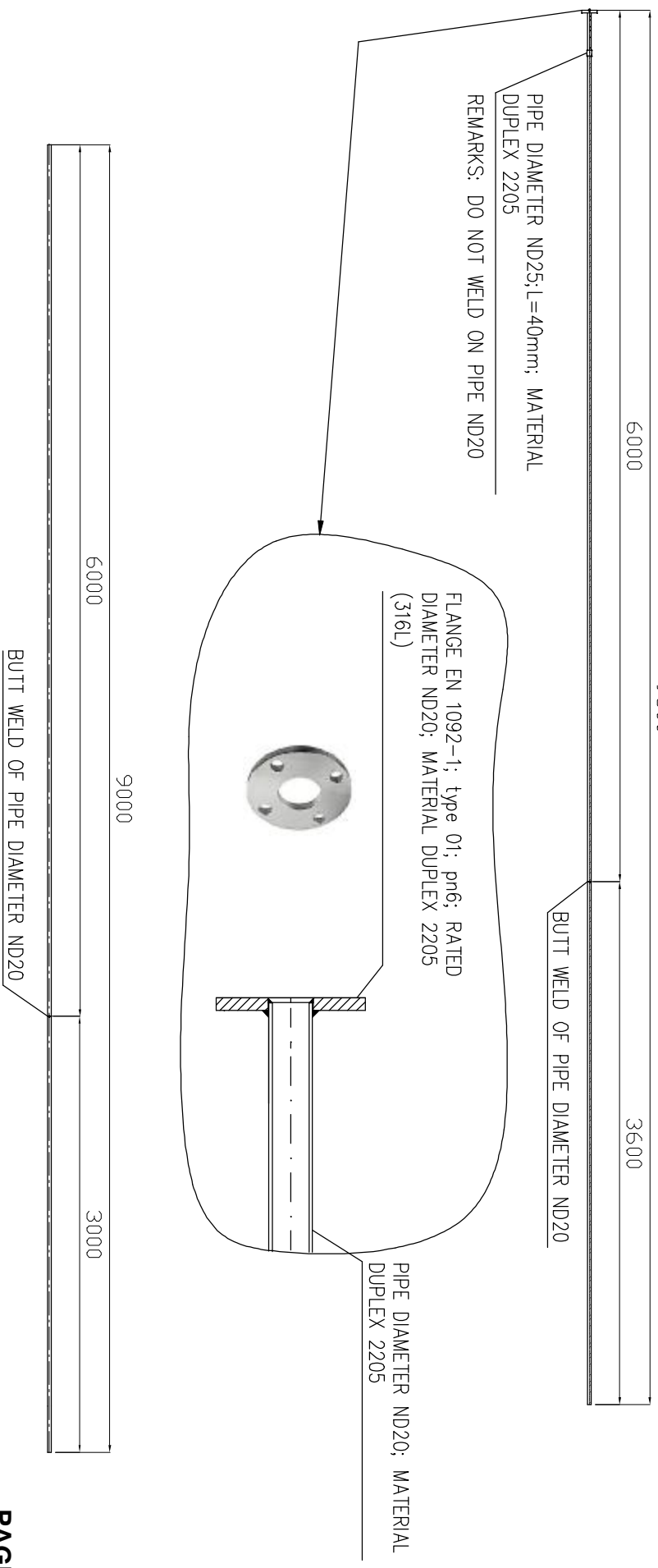
# A201/A4/18

9000

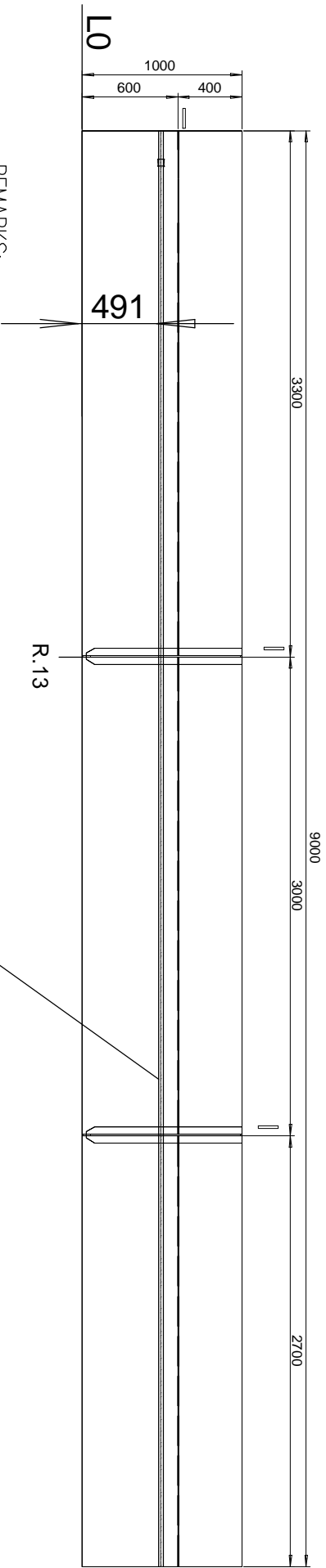


REMARKS:  
 PIPE ASSEMBLY ND20 FOR MICROPANEL A201/A4/18 SHOULD BE  
 MARKED AND PACKED TOGETHER WITH OTHER PIPE ASSEMBLY OF  
 MICROPANEL.

NOMINAL DIAMETER ND	OUTER DIAMETER Do (mm)	WALL THICKNESS (mm)	STANDARD	MATERIAL
20	26,9	2,0	EN 10216-5	2205
25	33,7	2,0	EN 10216-5	2205

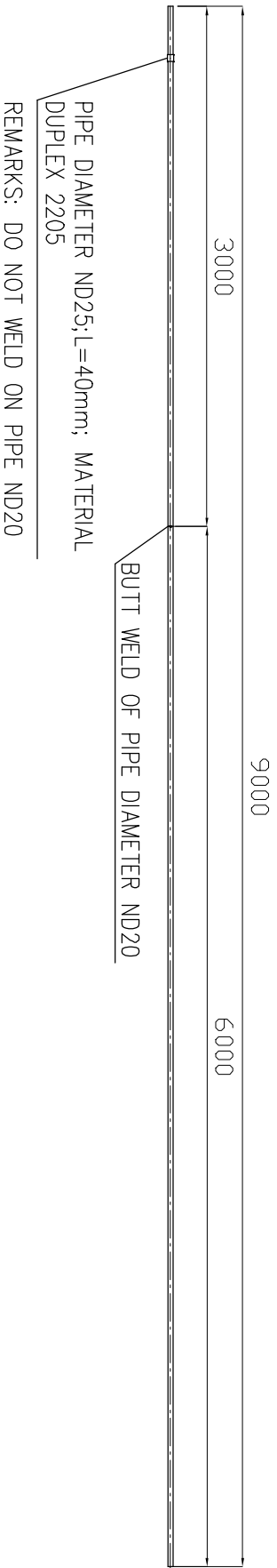


# A202/A2/12

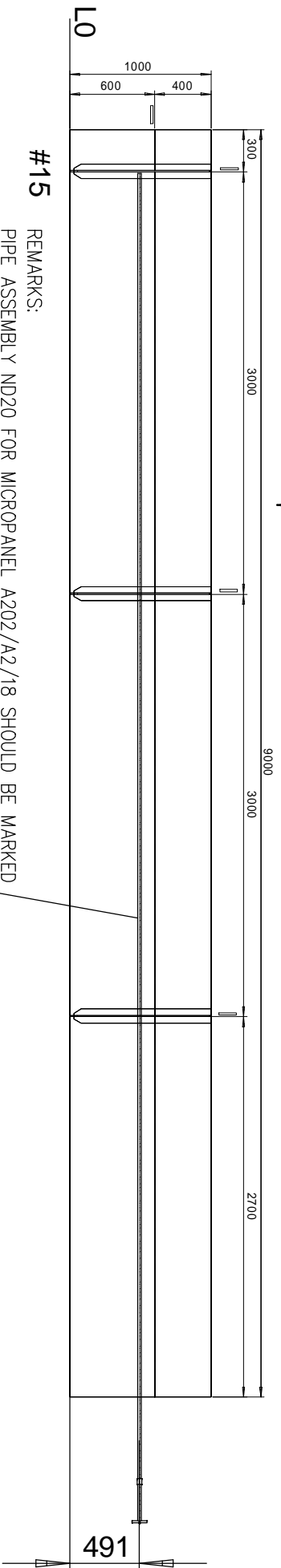


REMARKS:  
 PIPE ASSEMBLY ND20 FOR MICRO PANEL A202/A2/12 SHOULD BE MARKED  
 AND PACKED TOGETHER WITH OTHER PIPE ASSEMBLY OF MICRO PANEL.

NOMINAL DIAMETER ND	OUTER DIAMETER Do (mm)	WALL THICKNESS (mm)	STANDARD	MATERIAL
20	26,9	2,0	EN 10216-5	2205
25	33,7	2,0	EN 10216-5	2205



# A202/A2/18



#15

REMARKS:  
PIPE ASSEMBLY ND20 FOR MICROANEL A202/A2/18 SHOULD BE MARKED AND PACKED TOGETHER WITH OTHER PIPE ASSEMBLY OF MICROANEL.

NOMINAL DIAMETER ND	OUTER DIAMETER Do (mm)	WALL THICKNESS (mm)	STANDARD	MATERIAL
20	26,9	2,0	EN 10216-5	2205
25	33,7	2,0	EN 10216-5	2205

9600

3600

BUTT WELD OF PIPE DIAMETER ND20

PIPE DIAMETER ND25; L=40mm; MATERIAL DUPLEX 2205

REMARKS: DO NOT WELD ON PIPE ND20

FLANGE EN 1092-1; type 01; pn6; RATED DIAMETER ND20; MATERIAL DUPLEX 2205 (316L)

PIPE DIAMETER ND20; MATERIAL DUPLEX 2205

