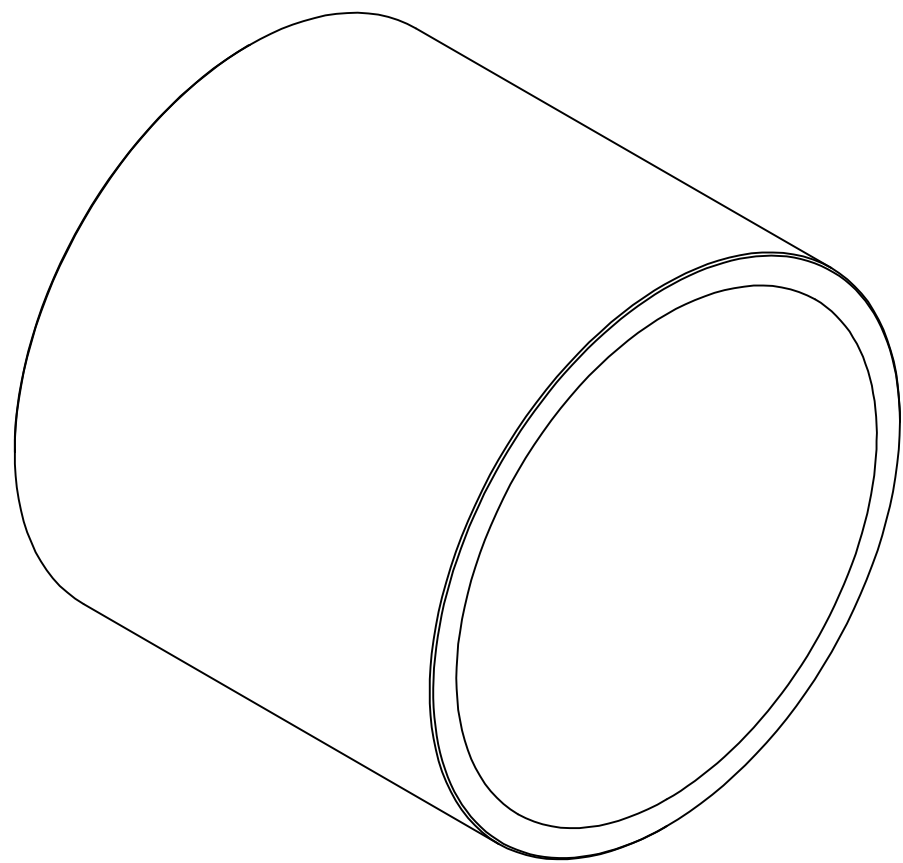


212.001 PRESSURE HULL ACRYLIC CYLINDRICAL SECTION									
POSITION	DESCRIPTION	MATERIAL	PCS	UNIT MASS [kg]	MASS [kg]	CENTROID			
						X[m]	Y[m]	Z[m]	
212.001-001	ACRYLIC CYLINDER VIEWPORT	ACRYLIC	6	3.073,93	18.443,57	9,600	0,000	2,070	
					18.443,57	9,600	0,000	2,070	

CYLINDRICAL SECTION
3D VIEW

212.001




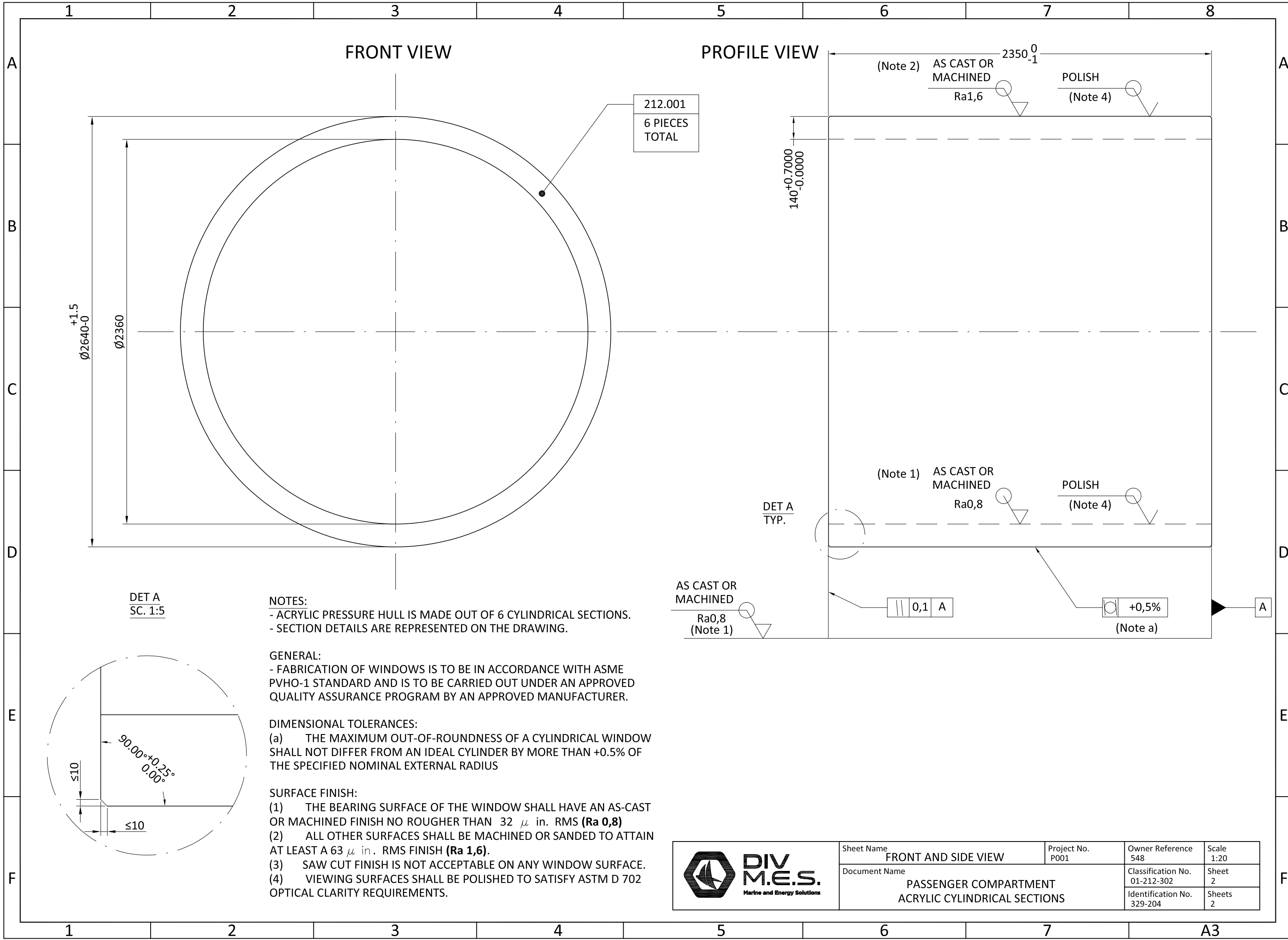
NOTE:

- REFERENCE POINT IS DEFINED IN DOCUMENTS:
P001-101-201 GENERAL ARRANGEMENT
P001-205-100-STRUCTURE-GENERAL ARRANGEMENT - ASSEMBLY
- ALL CENTROID COORDINATES IN RESPECT TO REFERENCE POINT
- ALL ASSEMBLIES IN DRAWINGS ARE SHOWN AFTER FORMATION AND MACHINING. FORMATION DETAILS SUCH AS EXCESS LENGTH OR THICKNESS BEFORE MACHINING ARE TO BE HANDLED IN WORKSHOP DOCUMENTATION.
- CORROSION ALLOWANCE: 1 mm

REFERENCE DRAWINGS:

- P001-101-201-GENERAL ARRANGEMENT
- P001-102-301-HULL STEEL MATERIAL SPECIFICATION
- P001-205-100-STRUCTURE - GENERAL ARRANGEMENT - ASSEMBLY
- P001-205-102-STRUCTURE - BUILDING STRATEGY
- P001-210-100-PRESSURE HULL - GENERAL ARRANGEMENT - ASSEMBLY
- P001-212-100-PRESSURE HULL - PASSENGER COMPARTMENT-ACRYLICS PRESSURE HULL

00	D. Romić	Issued for Class Approval	2022-04-27
Rev.	Prepared by	Description	Date
Project No. P001	File: P001-212-001-PRESSURE HULL-PASSENGER COMPARTMENT-ACRYLIC CYLINDRICAL SECTIONS-329204-Rev00		
Customer BRODOGRAĐEVNA INDUSTRIJA SPLIT d.d.	Project TOURIST SUBMARINE CLASS DESIGN	Prepared by D. Romić, Nav.Arch.	Date 2022-04-27
Company Marine and Energy Solutions DIV d.o.o. HR-10020 Zagreb, Froudeova 5 mes@divgroup.eu	This drawing is the property of Marine and Energy Solutions DIV Ltd. and must neither be used, reproduced nor handed over to any third party without our written consent.	Checked by Z.Šperanda, Nav.Arch.	Date 2022-04-27
		Approved by J. Čokić, Nav.Arch.	Date 2022-04-27
		Sheet Name CYLINDRICAL SECTION	Yard No. 548
		Document Name PASSENGER COMPARTMENT ACRYLIC CYLINDRICAL SECTIONS	Scale 1:30
			Classification No. 01-212-302
			Sheet 1
			Identification No. 329-204
			Sheets 2



212.001
6 PIECES
TOTAL

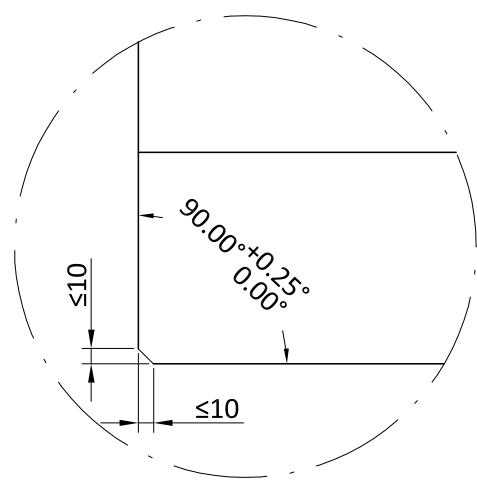
DET A
SC. 1:5

NOTES:
- ACRYLIC PRESSURE HULL IS MADE OUT OF 6 CYLINDRICAL SECTIONS.
- SECTION DETAILS ARE REPRESENTED ON THE DRAWING.

GENERAL:
- FABRICATION OF WINDOWS IS TO BE IN ACCORDANCE WITH ASME PVHO-1 STANDARD AND IS TO BE CARRIED OUT UNDER AN APPROVED QUALITY ASSURANCE PROGRAM BY AN APPROVED MANUFACTURER.

DIMENSIONAL TOLERANCES:
(a) THE MAXIMUM OUT-OF-ROUNDNESS OF A CYLINDRICAL WINDOW SHALL NOT DIFFER FROM AN IDEAL CYLINDER BY MORE THAN +0.5% OF THE SPECIFIED NOMINAL EXTERNAL RADIUS

SURFACE FINISH:
(1) THE BEARING SURFACE OF THE WINDOW SHALL HAVE AN AS-CAST OR MACHINED FINISH NO ROUGHER THAN 32 μ in. RMS (**Ra 0,8**)
(2) ALL OTHER SURFACES SHALL BE MACHINED OR SANDED TO ATTAIN AT LEAST A 63 μ in. RMS FINISH (**Ra 1,6**).
(3) SAW CUT FINISH IS NOT ACCEPTABLE ON ANY WINDOW SURFACE.
(4) VIEWING SURFACES SHALL BE POLISHED TO SATISFY ASTM D 702 OPTICAL CLARITY REQUIREMENTS.



AS CAST OR
MACHINED
Ra0,8
(Note 1)

DET A
TYP.

(Note 1) AS CAST OR
MACHINED
Ra0,8

POLISH
(Note 4)

(Note 2) AS CAST OR
MACHINED
Ra1,6

POLISH
(Note 4)

0,1 A

+0,5%
(Note a)



Sheet Name FRONT AND SIDE VIEW	Project No. P001	Owner Reference 548	Scale 1:20
Document Name PASSENGER COMPARTMENT ACRYLIC CYLINDRICAL SECTIONS		Classification No. 01-212-302	Sheet 2
		Identification No. 329-204	Sheets 2